

**GLENDINING & Co.**

LIMITED

**7, ARGYLL STREET, LONDON, W.1**

Phone: CERRARD 4424

*Catalogue of*

**Scottish, Irish and  
Anglo-Gallic Coins,  
Tokens & Colonial Coins**

The collection of the late  
**Rt. Hon. LORD GRANTLEY**

—♦—  
FIFTH PORTION

DAYS OF SALE

**THURSDAY, MAY 18th, 1944**

and following day

at 1.0 p.m. precisely.

ON VIEW two days prior and Morning of Sale.

**PRICED CATALOGUE FIVE SHILLINGS**

## CONDITIONS OF SALE.

---

- FIRST.**—The highest bidder to be the buyer; and if any dispute arise between two or more bidders, the lot so in dispute shall be immediately put up again and resold, provided the auctioneer cannot decide the said dispute.
- SECOND.**—No person to advance less than 1s.; above five pounds 5s.; and so on in proportion.
- THIRD.**—All lots are put up for sale subject (*a*) to any reserve price imposed by the seller and (*b*) to the right of the seller to bid either personally or else by any one person who may be the Auctioneer.
- FOURTH.**—The purchasers to give in their names and places of abode, and to pay down 5s. in the pound, or more in part of payment, or the whole of the purchase-money, *if required*; in default of which the lot or lots so purchased to be immediately put up again and resold.
- FIFTH.**—Each lot is believed to be genuine, but should any lot prove to be a forgery, or reprint, or wrongly described in the catalogue, the purchaser is at liberty to take or reject it, provided always that notice of such rejection be made and the lot returned within seven days from date of sale.
- SIXTH.**—The auctioneers will not hold themselves responsible for any action that may arise, acting solely as agents between buyer and seller and for both equitably.

The Auctioneers do not hold themselves responsible for the safe custody of any lots left more than three days after the date of Sale.

---

### Please Note.

The metal in which the coins are struck is indicated thus:—

*A* = gold, *R* = silver, *Æ* = copper or bronze.

*El* = Electrum (an alloy of gold and silver).

*Bl* = Billon (an alloy of silver and copper).

Care is taken to describe accurately the condition of coins and medals, using the following scale: *Extremely fine*, *Very fine*, *Fine*, and *Good*. Where no condition is stated it may be assumed that the coins and medals are not in good condition.

CATALOGUE  
OF  
THE VALUABLE  
AND  
EXTENSIVE COLLECTION

FORMED BY THE LATE RIGHT HON. LORD GRANTLEY

*The Priory, Old Windsor.*

FIFTH PORTION.

---

THE SERIES OF SCOTTISH  
IRISH AND  
ANGLO-GALLIC COINS.  
ENGLISH PATTERNS & PROOFS,  
ETC.

ENGLISH OBSIDIONAL COINS,  
SILVER TOKENS, ETC.

SEVENTEENTH CENTURY TOKENS,  
BRITISH COLONIAL COINS,  
UNITED STATES COINS, TOKENS, TICKETS,  
ETC.



## Fifth Portion

### SCOTTISH, IRISH AND ANGLO-GALLIC COINS, ETC.

*First Day's Sale:*

**Thursday, May 18th, 1944**

At 1.0 p.m. precisely.

#### SCOTTISH SERIES

DAVID I, 1124-1153

	£	s.	d.
*1671 Sterling or Penny, struck at Roxburgh, +DA[VID]REX, crowned bust of King, with sceptre to right; <i>rev.</i> +h[GVO] O X ROCAS, cross fleurettée with large pellet in each angle (Burns, Fig. 6A, p. 13), <i>very fine and rare</i> ∴ <i>From the Pollexfen and Murdoch (lot 1) Collections.</i>	7	0	0
1672 Sterling, type I, as last coin, struck at Berwick (?); another, type III, of Edinburgh, tressure fleurie type; a third, of Carlisle, annulet and pellet type, <i>the first two fine, the last two from the Reynolds Sale, 1919, lot 96; a fourth, uncertain, fine</i>	6	5	0

4

WILLIAM THE LION, 1165-1214

*1673 Sterling, of Roxburgh, RE . . . fine portrait of King to r.; <i>rev.</i> RAVL (?) ON ROC, cross with pellet at each end of limb, and fleur-de-lis in each angle ( <i>cf.</i> B, Fig. 25B, p. 47, <i>where these rare pieces are described as the earliest issues of William the Lion, very fine</i> ∴ <i>From the Murdoch Sale, lot 6.</i>	13	10	0
1674 Sterling of Roxburgh, +LE REI WILLAM, crowned bust l., with sceptre; <i>rev.</i> +RAVL ☉ N ROC, cross potent, crescent in each angle (B., Fig. 37), <i>very fine</i>	3	0	0
*1675 Sterling, of Roxburgh, similar; <i>rev.</i> +RAVL ON ROC, similar to last, <i>very fine</i> ∴ <i>From the Murdoch Sale, lot 10.</i>	2	15	0

- 3 10 0 1676 Sterling, of Roxburgh, +RAVL DE . . . BVR; another, of Edinburgh, +HVE ON EDENEB, cross potent with crescents and pellets in angles, *fine*, and a variety 3
- 4 0 0 1677 Sterlings of Perth (3), +FOLPOLT . . . PE, crescent and pellet coinage (B.4, Fig. 13); +FOLPOLT DE PERT, *very fine*; +FOLPOLT, *fine* 3
- 4 15 0 \*1678 Sterling of Perth, of the short double-cross type, +WILELMVS REX, head l., with sceptre; *rev.* WATER · ON · PER (B. type, Fig. 62, *but with differing legends*), *very fine*  
∴ *From the Murdoch Sale, lot 18.*
- 2 2 0 1679 Sterling of Perth, +WATER ON PR; another, of Edinburgh, ADAM ON EDENBV, and a third, reading . . . E: OHEDE, *from the Cochran Patrick Sale, lot 135, the first very fine* 3
- 1 10 0 1680 Sterling of Berwick, same issue, +ADAM . . . ED BERI; another, +WILLAM BEREWICK, cross potent with pellet and crescent in each angle (B. 6, p. 59), *both in fair state* 2
- 1 4 0 1681 Sterlings of Roxburgh, +HVE WALT ORO, +HVC WAL R●:, +HVE WALTOR, and +HVE WALTER, *the last fine* 4
- 1 1 0 1682 Others, +HVE:WALTER, +HVE WALTER, and others, including a forgery, *one pierced* 5
- 3 5 0 \*1683 Sterling, without mint, of the moneyer Henry le Rus, +LIE REI WILT, rude head l. with sceptre; *rev.* +HERI LE RWS, short double-cross type, *very fine and rare*

#### ALEXANDER II, 1214-49

- 6 5 0 \*1684 Sterling of Roxburgh, ALEXSAM[DER REX] crowned head l. with sceptre, *rev.* [PI]ERES ON ROC, short double cross with a star of six points in the angles (B.3, Fig. 72), *slightly cracked, very rare*  
∴ *From the Wingate (lot 22) and Cochran Patrick, 1936 (lot 137) Sales.*
- 2 10 0 1685 Sterling of Roxburgh, +ALEXANDER REX, crowned head r. with sceptre; *rev.* +ALAIN:ON ROOS (B.4, Fig. 73), *well preserved and very rare*

## ALEXANDER III, 1249—1285-6

1686	Sterlings of Berwick, of the long double-cross series, <i>rev.</i> IOHAN . . . BER, stars of six points in angles of cross; IOH—AN/BER—ON, and WALTER ON BER (2 var.), <i>two fine, one pierced</i>	1 16 0
		4
1687	Sterlings of Berwick, both of Walter (two var., <i>fine</i> ); others, of Roxburgh, ANDREW ON RO: (B.22a, <i>Fig.</i> 107b), and ADAM ON RO, <i>from the Cochran-Patrick Collection, fine</i>	2 0 0
		4
1688	Sterlings of Perth, IO $\bar{N}$ /CO/RIN $\bar{O}$ P; IO $\bar{N}$ /CO/—ON/PE, <i>pierced</i> ; ION/CO RIII/ON . . ; ION/COR/INO/HP; . . . COR/ON/O $\bar{N}$ P, <i>fine</i>	2 15 0
		5
*1689	Sterling of Aberdeen, same type, ALEX ON. ABIRD (B.47, <i>Fig.</i> 135), <i>very fine and rare</i> <i>∴ From the Murdoch Sale, lot 29.</i>	2 15 0
1690	Sterling of Aberdeen, SIM/OH/OH/AB, <i>very fine and rare</i>	1 18 0
1691	Sterling of Glasgow, WA/LTE/R $\bar{O}$ $\bar{N}$ /GLA (B.53, <i>Fig.</i> 118), <i>very good and rare</i>	1 10 0
1692	Sterlings of Dumfries, WA/LTE/R $\bar{O}$ $\bar{N}$ /DVN (B.59); WALTER $\bar{O}$ H $\bar{D}$ /VN; ALE/TER/O $\bar{N}$ $\bar{D}$ /VH (B.61, <i>Fig.</i> 132), <i>fine</i>	2 15 0
		3
1693	Sterling of Edinburgh, ALE/XON/ED/EN (B.65, <i>Fig.</i> 134), <i>fair, pierced</i> ; another, of St. Andrews, TOM/AS/ON/AH, <i>fine and rare</i>	2 10 0
		2
*1694	Sterling of Sterling, HEN/RI ON/ST/RIV, <i>very fine, from the Cochran-Patrick Sale</i>	2 15 0
1695	Sterlings of Edinburgh, ALE/XON/ED/EN, <i>pierced</i> ; Berwick, IOH/AN/ON/BER, <i>fine</i> ; Roxburgh, Perth, and uncertain	2 8 0
		6
*1696	Sterling of Lanark, WILAM ON L:, <i>fine and rare; from the Pollexfen Collection</i>	2 7 6
1697	Sterling, Group I, Class I, REX SCOTORVM, long single cross with mullet in each angle (B.1, <i>Fig.</i> 141), and two varieties; others (2) (B.2, <i>Fig.</i> 142, and B.3), <i>all fine</i>	1 10 0
		5

- 1 10 0 1698 Sterlings, Group I, Class II (B.6a, Fig. 167a), Class III (B.12, Fig. 151; B.13; B.13 var.; B.13 var., Fig. 150; two pellets after GRA; B.15 var., Fig. 157, no pellets on crown), *all very fine* 9
- 1 10 0 1699 Sterlings, *obv.* Class I, *rev.* Class II (B.16 var., Fig. 143); *obv.* Class I, *rev.* Class III (B.18, Fig. 145; B.17, Fig. 144; B.20, Fig. 146); *obv.* Class III, *rev.* Class II (B.23, Fig. 153), etc., *fine* 6
- 1 14 0 1700 Sterlings, Group II, Class I (B.30, Fig. 160; B.31); Group II, Class II (B.32 var., Fig. 165, *two*; B.33, Fig. 166, *two*; B.34, Fig. 166; B.34a, Fig. 168a; B.35, Fig. 167; B.36, Fig. 168), *all fine* 11
- 1 10 0 1701 Sterlings, Group II, Class II (B.39, Fig. 170; B.42, Fig. 172); Group II, Class III (B.45 var., Fig. 180; B.47, Fig. 185; B.48a, Fig. 185a; B.49, Fig. 186); *obv.* Class I, *rev.* Class II (B.55, Fig. 162); *obv.* Class I, *rev.* Class II (B.56a, Fig. 163B, *two*); *Obv.* Class II, *rev.* Class II, (B.56 var., Fig. 165), *all fine* 10
- 1 2 0 1702 Sterlings, *obv.* Class II, *rev.* Class I (B.60, Fig. 174, *two varieties*); *obv.* Class II, *rev.* Class III (B.64a, Fig. 177A; B.76, Fig. 205), and another, Baliol type (B.79, Fig. 209), *the last from the Cochran-Patrick Sale, all fine* 5
- 4 10 0 \*1703 Half Sterling, +ALEXANDER DEI GRA, crowned head to left, with sceptre; *rev.* REX SCOTORVM+ long single cross with mullet in two angles (B.1, Fig. 192), *fine and rare*  
 \*From the Holton Sale, 1897, lot 218.
- 1 1 0 1704 Half Sterling, similar (B.2, Fig. 193), *gcod*
- 2 6 0 \*1705 Quarter Sterling, or Farthing, +ALEXANDER REX, crowned head l., with sceptre; *rev.* SCOTORVM, long plain cross with a mullet in each quarter (B.2 var., Fig. 197), *fine for the coin, pierced, very rare*
- JOHN BALIOL, 1292-1314**
- 2 10 0 1706 Sterlings, of smooth surface, long plain cross with mullet in each quarter (B.16, Fig. 219; B.17, Fig. 220; B.18, Fig. 221); others, of rough surface (B.1, Fig. 210; B.1b, Fig. 210B; B.3, Fig. 212; B.16, Fig. 219), *chiefly fine* 7



- 1707 Sterlings, of St. Andrews, *rev.* CIVITAS SANDREE (B.12, Fig. 215, and B.12 *var.*), *cne fine, both rare* 2 2 0 0
- 1708 Sterling, of Rex Scotorum type, having two mullets of six points, one of seven points, and one star of seven points, *mentioned by Burns on p. 224, rather fine and very rare* 1 10 0  
*∴ From the Cochran-Patrick Sale, lot 174.*
- \*1709 Half Sterling, + IOHANNES DEI GRA, crowned head l., with sceptre; *rev.* REX SCOTORVM+, plain cross with mullets of six points in second and third quarters (B.1, Fig. 222), *fine and rare* 2 2 0
- 1710 Half Sterling, similar to last, with GR—A (B.1 *var.*, Fig. 222), *very good and rare* 1 0 0  
*∴ From the Longbottom Sale.*

#### ROBERT BRUCE, 1306-1329

- 1711 Sterling, + ROBERTVS:DEI:GRA:, crowned head l., with sceptre; *rev.* SCOTORVM REX, plain cross with a mullet of five points in each angle (B.1, Fig. 225), *very fine* 3 5 0  
*∴ From the Murdoch Sale, lot 43.*
- 1712 Sterling, similar, with two pellets before ROBERTVI, *fine* 1 14 0
- \*1713 Half Sterling, + ROBERTVS:DEI:GRA, crowned head l., with sceptre; *rev.* SCOTORVM:REX +, plain cross, etc. (B.1, Fig. 227), *in fair state, and very rare* 3 12 6  
*∴ From the Longbottom Sale, 1934, lot 312.*

#### DAVID II, 1329-1370

- 1714 Sterlings or Pennies, Rex Scotorum type (B.1, Fig. 229; B.4, Fig. 231; B.7, Fig. 233; B.12, Fig. 237; B.13, Fig. 237; B.14, Fig. 238; B.18, Fig. 241; B.23, Fig. 244, and B.24, Fig. 245), *all fine* 2 15 0  
 10
- 1715 Groats of Edinburgh, with small head l., with sceptre, in tressure, etc., *rev.* VILL—A ED—INBV—RGH (B.4, Fig. 252; B.7, *var.*, Fig. 253; B.9 *var.*, Fig. 256), *all varied, fine* 1 16 0  
 5

- 2 0 0 1716 Groat of Edinburgh, small head, *rev.* + DNS A PTECTOR, etc., VILLA + EDINBVRGH (B.12, *Fig.* 259), *very fine*; *from the Murdoch Sale, lot 48.*
- 2 6 0 1717 Groats of Edinburgh, similar (B.10, *Fig.* 257; no crosslet before ED, B.13, *Fig.* 260; B.15a, *Fig.* 262B; B. *Fig.* 286, third intermediate head; B.19, *Fig.* 279; B.23 *var.*, *Fig.* 282), *chiefly fine, two pierced* 8
- 1 17 6 1718 Groats of Edinburgh, all varied, *chiefly fine* 8
- 1 14 0 \*1719 Groat of Aberdeen, VILL—A<sup>x</sup>A—BER—DON, no stops after DNS, D instead of P (B.16 *var.*, *Fig.* 255), *fine*
- 1 14 0 1720 Light Edinburgh Groats (B.38, *Fig.* 301; B.40; B.31 *var.*, *Fig.* 291; B.38 *var.*; B.41, *Fig.* 302; B.42, *Fig.* 305, and B.43, *Fig.* 306), *chiefly fine* 7
- 1 16 0 1721 Edinburgh Half Groats, small head (B.1, *Fig.* 263; B.1 *var.*, x after DNS; no x after SCOTORVM, *very fine and scarce* 2
- 4 10 0 \*1722 Edinburgh Half Groat, with intermediate head, ‡ after MEVS (B.8, *rev.* No. 9), *extremely fine*; *from the Murdoch Sale, lot 54*
- 3 3 0 1723 Edinburgh Half Groats (2) (B.3, *Fig.* 264, SCOTORVM; B.4, *Fig.* 263, *very fine*), and another, of Aberdeen (B.6, *Fig.* 265), *fine* 3
- 2 5 0 1724 Edinburgh Half Groats, intermediate head (B.9 *var.*, *Fig.* 269; B.10 *var.*, *Fig.* 272; B.20 *var.*, *Fig.* 300; B.18, *Fig.* 299), the last three with Robert II head, etc., *chiefly fine* 7
- 1 4 0 1725 Edinburgh Pennies, small head (B.1, *Fig.* 266; B.1 *var.*, *two*; B.3, *Fig.* 260; B.4, *Fig.* 267, and B.6 *var.*, *Fig.* 274, with intermediate head), and another, with head of Robert II (B.12, *Fig.* 304), *cracked, some fine* 7
- ROBERT II, 1370-1390**
- 1 0 0 1726 Edinburgh Groats (B.3, *Fig.* 309; B.4, *Fig.* 310; B.7, *Fig.* 328, *cracked*; B.9, *Fig.* 384), *one fine* 4
- 1 6 0 1727 Perth Groats (B.10 *var.*, *Fig.* 317, *two*; B.11, *Fig.* 318; B.14, *Fig.* 335, and B.14 *var.*, with x after SCOTTORVM, *in fair state* 5

- 1728 Edinburgh Half Groat (B.2, *Fig. 312, cracked*), and another, of Perth (B.9 *var.*, *Fig. 320, reading SCOTORVM*; Pennies of Edinburgh (B.1 *var.*, *Fig. 313, reading SCOTOR, chipped*) and of Perth (B.8, *Fig. 322*, and B.8 *var.*, reading SCOTTORVM: and AED), *good* 1 7 0  
5

### ROBERT III, 1930-1406

- 1729 Edinburgh Groats, crowned bust facing within tressure (B.2, *Fig. 320*; B.3, *Fig. 340*; B.4, *Fig. 344, VILLA*<sup>x</sup>; B.5, *Fig. 348*, and B.5 *var.*, M and the cross in monogram). *fine* 1 10 0  
5
- 1730 Edinburgh Groats (B.6, *Fig. 348*; B.7; B.10, *Fig. 353*; B.12, and B.14, *Fig. 357*), *chiefly fine* 1 1 0  
5
- 1731 Edinburgh Groats (B.14 *var.*, *Fig. 357, ✚* as m.m. on *obv.* and *rev.*; B.15, *Fig. 358*; B.15 *var.*, with REX; B.37, *Fig. 381*, and B.39 *d. var.*, *Fig. 382A*), *fine* 1 10 0  
5
- 1732 Edinburgh Groats (B.30, *Fig. 395*; B.33, *Fig. 379*; B.34, *Fig. 380*; B.39h, *Fig. 388B*, reading GRACIA, and two other varieties), *fine* 2 0 0  
6
- 1733 Perth Groats (4) (B.17, *Fig. 361*; B.20, *Fig. 362, two varieties*, and another); Half Groat (B.13, *Fig. 376*), *rare, fine* 2 10 0  
5
- 1734 Edinburgh Penny (B.1 *var.*, *Fig. 388, chipped*); another, without mint name, with crosslet stops, and VM<sup>z</sup> (B.5 *var.*, *Fig. 403B*), *scarce*; Edinburgh Halfpenny (B.2a, *Fig. 399a*), *fine, the last from the Highbury find, and Murdoch Collection* 3 5 0  
3

### JAMES I, 1406—1436-7

- 1735 Edinburgh Groats, crowned bust with sceptre, facing (B.39, *Fig. 477, from the Murdoch Sale, lot 92*; *Fig. 441*; B.44, *Fig. 488*), and two others, *the first fine* 2 2 0  
5
- 1736 Edinburgh Groat (B.38 *var.*, *Fig. 476*, annulet in third quarter), *fine*, and others, *varied, but in poor state* 3 0 0  
12
- 1737 Perth Groat, VILL—A<sup>x</sup>DE<sup>x</sup>—PER—TH<sup>x</sup>, *slightly chipped, very good, from the Pollexfen Sale* 17 0

## JAMES II, 1436-1460

2	10	0	1738	Edinburgh Groat, fourth variety of the fleur-de-lis, m.m. cross fourchée (B.17b, <i>Fig. 508a</i> ); Crown Groats (B.17 <i>var.</i> , <i>Fig. 532</i> , PRO; no stops after LA; B.16, <i>Fig. 531</i> ; B.19a, <i>Fig. 532</i> ), <i>fair</i>	4
3	3	0	1739	Edinburgh Crown and Pellet Groat (B.2a, <i>Fig. 515</i> ); others, with annulets in two quarters of <i>rev.</i> (B.15, <i>Fig. 531</i> , and B.19a, <i>Fig. 530</i> , from the Cochran-Patrick Sale, lot 212), <i>fine</i>	3
5	5	0	1740	Edinburgh Crown and Pellet Groats (B.19a, <i>Fig. 532</i> ; B.24b, <i>Fig. 538</i> , two varieties; B.25, <i>Fig. 542</i> ; B.27 <i>var.</i> , <i>Fig. 542</i> ; B.35 <i>var.</i> , <i>Fig. 540</i> ; B.34 <i>var.</i> ; B.30a, <i>Fig. 549a</i> ), all varied, <i>some fine</i>	9

## JAMES III, 1460-1488

2	4	0	1741	Light Groats of Edinburgh, bust of King three-quarter face to r. (B. <i>Fig. 578</i> ; B.12 <i>var.</i> , <i>Fig. 582</i> ; B.11, <i>Fig. 581</i> ; B. <i>Fig. 583</i> , etc.), <i>fair</i>	6
3	10	0	1742	Berwick Groat, facing bust, <i>rev.</i> cross pattée with mullets of six and pellets in the angles, + VILLA BERWICHI (B.16, <i>Fig. 589</i> ), and Penny of Edinburgh (B.3, <i>Fig. 611</i> ), <i>scarce, both fine</i> <i>∴ From the Cochran-Patrick Sale, lot 223.</i>	2
5	5	0	1743	Edinburgh Light Groats, facing bust with crown of five fleurs-de-lis (B.24, <i>Fig. 605</i> ), <i>very fine</i> ; another (B.25 <i>obv.</i> , 27 <i>rev.</i> , <i>Fig. 605</i> ), <i>very fine, the second from the Murdoch Sale, lot 127</i>	
2	0	0	1744	Edinburgh Light Groat, similar type to last (B.24 <i>var.</i> , <i>Fig. 605</i> ), <i>fine and rare</i> ; another, crown with three fleur-de-lis, <i>rev.</i> mullets in first and third quarters (B.17 <i>var.</i> , <i>Fig. 590</i> ), <i>good</i>	2
2	10	0	1745	Edinburgh Groats, crowned bust three-quarter face to left, <i>rev.</i> crown and pellet type (B.39, <i>Fig. 638</i> ; B. <i>Fig. 640</i> ), varied, <i>good</i>	5
2	10	0	1746	Edinburgh Groats, of last type (B. <i>Fig. 642</i> , <i>very fine</i> ) and others (3) <i>chipped</i> ; Edinburgh Plaeks (2) and Half Plaek	7

## JAMES III, 1488-1513

1747	Edinburgh Groat, crowned bust facing within tressure of seven arches, <i>rev.</i> cross fourchée with three pellets in two angles and mullets in two others; <i>rev.</i> reads TVRMS instead of ATORMS (B.2b., <i>Fig.</i> 656a), <i>chipped, rare</i>	1	0	0
*1748	Edinburgh Numeral Groat, m.m. crown, full-faced bust, legend ends in QRA (for Quartus), <i>rev.</i> VII.LA*EDIN*BVRGE (B.8 <i>var.</i> , <i>Fig.</i> 665), <i>fine and scarce</i> ∴ <i>From the Cochran-Patrick Sale, lot 227.</i>	6	5	0
*1749	Edinburgh Numeral Groat, with Roman numeral IIII and a five-pointed star each side of neck (B.14 <i>var.</i> ), <i>very fine and rare</i>	10	0	0
1750	Edinburgh Groat, as last (B.15 <i>var.</i> , <i>Fig.</i> 675), <i>slightly chipped, otherwise very fine</i>	1	12	0
1751	Placks (33), varied; Half Placks, Pennies, etc. (10), <i>some fine</i>	2	6	0
		43		

## JAMES V, 1513-1542

1752	Edinburgh Groat, First coinage, crowned and clothed bust r., <i>rev.</i> ∴ OPPI—DV. ∴ E—DINB—VRGI, shield of Scotland on cross fourchée (B.1, <i>Fig.</i> 706), <i>two varieties, fine</i>	1	6	0
		2		
1753	Edinburgh Groats, same coinage (B. 2 <i>var.</i> , <i>Fig.</i> 706, SCOTORV̄; B.4, <i>Fig.</i> 706, seven pellets on band of crowns; B.5, <i>Fig.</i> 707, and B.6, <i>Fig.</i> 708), <i>in very good state</i>	1	10	0
		4		
1754	Edinburgh Groats, similar (B.8, <i>Fig.</i> 712; B.9), second type (B.19, <i>Fig.</i> 720; B. 20 <i>var.</i> , <i>Fig.</i> 721, two <i>var.</i> ), <i>fair</i>	2	12	6
		5		
1755	Edinburgh Groats, second type (B.18 <i>var.</i> , <i>Fig.</i> 719), etc., <i>two very fine</i>	1	18	0
		3		
1756	Edinburgh Third Groats (B.1, <i>Fig.</i> 710; B.2 <i>var.</i> , <i>Fig.</i> 711, <i>two varieties</i> ; B.4 <i>var.</i> , <i>Fig.</i> 711), <i>two fine, scarce</i> ; billon Pennies (3) of Cross Raguel Abbey	1	0	0
		7		
1757	Placks (19), all varied, <i>some fine</i>	19	10	0
1758	Bawbees (9) and Half Bawbees (3), varied, <i>some fine</i>	12	18	0

## MARY, 1542—1586-7

## Before Marriage with Francis, 1542-1558

22	0	0	*1759	Testoon, 1553, *MARIA·DEI·GRA·R·SCOTORVM, crowned bust to r., <i>rev.</i> + ·DA·PACEM·DOMINE·1553; crowned arms of Scotland, between two cinquefoils (B.1, <i>Fig.</i> 780), <i>well preserved and very rare</i>	
3	5	0	1760	Testoon, 1555, large M between two crowned thistle heads, <i>rev.</i> , DILICIE·DNI·COR·HVMILE, the Scottish arms on large cross potent (B.5, <i>Fig.</i> 783), and Half Testoon, of same date and type (B.2 <i>var.</i> , <i>Fig.</i> 785), <i>fair, and scarce</i>	2
2	10	0	*1761	Half Testoon, 1555, type of last coin (B.4 <i>var.</i> , <i>Fig.</i> 785), <i>fine and rare</i>	
1	4	0	1762	Half Testoon, 1555 (B.3, <i>Fig.</i> 784), <i>well preserved</i>	
3	0	0	1763	Testoon, 1557, Scottish shield between M—R crowned; <i>rev.</i> IN VIRTUTE TVA LIBERA ME·1557, cross potent with small plain crosses in the angles (B.18, <i>Fig.</i> 793), <i>fine</i> ; another, similar, of 1558 (B.24, <i>Fig.</i> 797), <i>very fine</i>	2
5	0	0	*1764	Half Testoon, 1556, similar type (B.5, <i>Fig.</i> 800, and a variety, B.8a, <i>Fig.</i> 801A, <i>illustrated, from the Murdoch Sale, lot 197</i> ), <i>very fine and rare</i>	2
4	0	0	*1765	Half Testoon, 1558 (B.15 <i>var.</i> , <i>Fig.</i> 806), no stops on <i>obv.</i> , <i>very fine</i>	
1	8	0	1766	Edinburgh Bawbees (28), all varied, <i>many fine</i>	29
1	1	0	1767	Half Bawbees (6) and Plaeks (8), all varied, <i>some fine</i>	14
2	17	6	1768	Pennies (B.3, <i>Fig.</i> 864) ( <i>two</i> ), <i>very fine</i> , and one of 1556 (B.1, <i>Fig.</i> 869, <i>rare</i> ; Hardheads, 1555 (2) (B.4, <i>Fig.</i> 868), <i>fine</i> ; others of 1558 (5), varied, <i>fine</i>	10

## Francis and Mary, 1558-1560

1	10	0	1769	Testoon, 1558, shield of arms of the Dauphin and Scotland on cross potent; <i>rev.</i> FM in monogram under crown, etc. (B.1 <i>var.</i> , <i>Fig.</i> 877; countermarked with thistle head, <i>fair</i>	
1	1	0	1770	Testoon, 1558, a variety of the last (B.2, <i>Fig.</i> 877), <i>fine</i>	

*1771	Testoon, 1559 (B.6, <i>Fig. 879</i> ), <i>very fine</i>	4	10	0
*1772	Testoon, 1560 (B.12, <i>Fig. 883</i> ), no crosses at beginning of obv., <i>in very good state and very rare</i>	2	2	0
1773	Testoon, 1560 (B.12 var.), countermarked with crowned thistle to l. of FM monogram; another, double-struck (B.12, <i>Fig. 883</i> ), <i>fine</i>	1	17	6
		2		
1774	Testoon, 1560 (B.8 var., <i>Fig. 884</i> ), no crosslets above the lis and thistle on rev., <i>fine</i>	2	0	0
1775	Half Testoon (B.3 var., <i>Fig. 886</i> ), imperial crown on obv., <i>pierced, and in poor state, rare</i>	10		0
1776	Non Sants (4), FM in monogram crowned between a crowned dolphin and a crowned thistle, 1558 (B.1, <i>Fig. 889</i> ), 1559 (B.4, <i>Fig. 890</i> ; B.8, <i>Fig. 891</i> ; B.10, <i>Fig. 891</i> ), and a forgery; Hardhead or Lion, 1558 (B.1, <i>Fig. 892</i> ), 1559 (B.2, <i>Fig. 894</i> ; B.6 var., and others (3), <i>fair</i>	1	0	0
		11		

#### First Widowhood (1561-1656)

*1777	Testoon, 1561, bust of the Queen to left, wearing widow's cap, hair in queue behind, the date on a label below; rev. crowned escutcheon with the arms of France half effaced by those of Scotland, a crowned M at each side (B.2, <i>Fig. 897</i> ), <i>very fine</i>  ∴ <i>From the Morgan Sale, 1935.</i>	23	0	0
*1778	Testoon, 1562, similar type (B.4, <i>Fig. 899</i> ), <i>extremely fine</i> <i>and a very rare date</i>	35	0	0
*1779	Half Testoon, 1561, similar type (B.2, <i>Fig. 902</i> ), <i>plugged and</i> <i>only well preserved, very rare</i>  ∴ <i>From the W. Clarkson Sale, lot 452.</i>	6	0	0

#### Mary and Henry, 1565-1567

1780	Two-thirds Ryal, 1566, Arms of Scotland, crowned, rev. palm tree, crowned, etc., countermarked with crowned thistle to l. (B.13, <i>Fig. 908</i> ), <i>well preserved</i>	1	10	0
*1781	One-third Ryal, 1565, DISSIPENTR (B.17, <i>Fig. 910</i> ), <i>extremely fine and a rare variety</i>	4	15	0

- 1 10 0 \*1782 Ryal, 1566, usual type, + MARIA · U · HENRIC<sup>9</sup> · DEI · GRA  
etc., rev. EXVRGAT · DEW · C · DISSIPENT<sup>R</sup> (B.5, Fig.  
905), *very fine*

### Mary's Second Widowhood (1567)

- 4 0 0 \*1783 Ryal, 1567, type as before, reading MARIA · DEI · GRA ·  
SCOTORVM · REGINA, rev. EXVRGAT, etc., *fine and  
scarce*, and a Jeton, dated 1579 (B. Fig. 920)

### JAMES VI, 1567-1625

- 3 0 0 \*1784 Ryal or Thirty-Shilling Piece, 1569, IACOBVS · 6 · DEI ·  
GRATIA : etc.; rev. . . . PRO · ME · SI · MEREOR · IN ·  
ME ·, an upright sword, with crown at point; in field l.,  
hand pointing to XXX, date in the field, 15—69,  
*unusually fine*
- 1 16 0 1785 Ryal, 1569, as last coin, *not fine*: Half Merks or Nobles,  
1572, 1573 and 1574 (B.2, Fig. 925; B.4, Fig. 924; B.7,  
Fig. 924), *fair* 4
- 2 5 0 1786 Half Merks, 1574, 1575, 1576, 1577 (2) (B.6, 8, 10 and 11;  
Fig. 924-5), *two fine, scarce*; and  $\frac{1}{4}$  Merk, 1577 (B7,  
Fig. 929) 6
- 2 2 0 \*1787 Thirty Shilling Piece, 1583, crowned bust of King in armour  
to l., holding sword; rev. crowned arms between I—R—<sup>x</sup>S  
(B.3, Fig. 932), *fine*
- 1 6 0 1788 Thirty-Shilling Piece, 1583, as last, *fine*
- 1 0 0 1789 Twenty Shilling Piece, 1582, similar type (B.1, Fig. 934),  
and another of 1583 (B.3, Fig. 934), *both only well pre-  
served*; also Ten Shilling Piece, 1582 3
- 8 0 0 1790 Two Merk Piece, 1579, crowned arms of Scotland, rev.  
crowned thistle between I—R (B.2, Fig. 930a), *only good,  
but very rare*
- 1 14 0 \*1791 Balance Half Merk, 1591, crowned arms between two thistle  
heads, rev. HIS DIFFERT, etc., a pair of scales and  
sword (B.1, Fig. 937), normal N's, *very fine*
- 15 0 1792 Balance Half Merk, 1591, with N's (B.2, Fig. 937), *well  
preserved*



*1793	Ten Shilling Piece, 1594, bare-headed bust of King r., <i>rev.</i> thistle head with three blooms (B.2, <i>Fig.</i> 939), <i>very fine</i>	1	2	0
1794	Ten Shilling Piece, 1595, 1598, and 1599 (B.3, <i>Fig.</i> 939; B.4 and 6), <i>fine</i>	3	1	10 0
1795	Five Shilling Pieces, 1594, 159x, 1595 (B.1 and 2, <i>Fig.</i> 940); Thirty Penny Pieces, 1594 and 1595, and Twelve Penny Piece, date not visible, <i>fair</i>	6	2	12 6
1796	Thistle Merks, 1601, 1602, 1603 and 1604 (B.1, 3, 5 and 6), <i>two fine</i>	4	1	7 0
1797	Thistle Half Merks, 1602, 1603 and 1604; Quarter Thistle Merks, 1601, 1602; Eighths 1601 and 1602, <i>fair</i>	7	1	8 0
1798	Edinburgh Placks (5), varied; Two Penny Placks (2); Æ Twopence, <i>some fine</i>	8	1	2 0

#### After Accession to the English Throne

1799	Thirty Shilling Piece, or Half Crown, second issue, King on horseback r.; <i>rev.</i> garnished shield of arms (B.14, <i>Fig.</i> 984), <i>fine</i> , and another of the first issue (B. <i>Fig.</i> 973), <i>fair</i>	2	1	14 0
1800	Scottish Two Shillings (7), Shillings (5), Six Penny Pieces (8), all varied; Æ Turners (3), varied, <i>chiefly fine</i>	23	4	10 0

#### CHARLES I, 1625-1649

1801	Thirty Shilling Piece, or Half Crown, King on horseback l., <i>rev.</i> QVÆ DEVS, etc., <i>rev.</i> crowned arms; m.m. small thistle head between two pellets (B. 20, <i>Fig.</i> 1015); another, with large fleur-de-lis over shield (B, 20 <i>var.</i> ), <i>both fine</i>	2	1	16 0
1802	Thirty Shilling Pieces, similar, varied, <i>in fair state</i>	4	1	0 0
*1803	Briot's Thirty Shilling Piece, m.m. anemone and B (B., <i>Fig.</i> 1006), <i>very fine and scarce</i>		2	10 0
1804	Twelve Shillings, first issue, type of James I, with IACOBVS altered to CAROLVS (B.3, <i>Fig.</i> 998), <i>fine</i>		1	0 0

1	1	0	1805	Twelve Shillings, by Falconer, crowned bust l., partly below inner circle (B.42, <i>Fig.</i> 1020); another, with bust wholly within the inner circle (B.44); a third, with F above crown on <i>rev.</i> (B.24, <i>Fig.</i> 1017), <i>fine</i>	3
2	5	0	*1806	Twelve Shillings, by Falconer, F to l. of mint-mark (B.42, <i>Fig.</i> 1020), <i>extremely fine</i>	
16	0		1807	Twelve Shillings, by Briot, with B above crown on <i>rev.</i> , <i>fair</i> , and two others, without artists' signatures	3
16	0		1808	Six Shillings (4) (B.1, <i>Fig.</i> 1001; B.9, <i>Fig.</i> 1008, and B.11, <i>Fig.</i> 1010); Forty Penny Pieces (10), varied; 20 Penny Pieces (4), varied, some by Falconer and Briot, <i>some fair</i>	17
1	4	0	1809	Six Shilling Piece, by Falconer, F above crown on <i>rev.</i> (B.45), <i>fine and scarce</i> ; Two Shillings, rose and thistle (B.6, <i>Fig.</i> 10000)	2
19	0		1810	Twenty Penny Pieces (13), all varied; Two Shillings, <i>rev.</i> crowned arms (B.63 <i>var.</i> , <i>Fig.</i> 1026), <i>some scarce</i>	14
11	0		1811	Æ Turners (9), Bodles (7), all varied	16

#### CHARLES II, 1660-1684

2	10	0	1812	Two Merk Pieces, or Half Crowns, 1675 and 1676; Merks (10), 1664, 1669 (3 <i>var.</i> ), 1671 (2 <i>var.</i> ), 1672, 1673, 1676 and 1677, all varied, <i>some fine</i>	12
1	15	0	1813	Half Merks (5), 1669, 1675, 1676, 1677 and 1680, varied, <i>fine</i> ; Forty Penny Pieces, 1677 and 1681, <i>in mint state</i> ; Æ Bawbees (3), 1677, 1678 and 1679, and Bodle, 1677, <i>all very fine</i>	11

#### JAMES VII, 1684-1688

8	10	0	*1814	Pattern Sixty Shillings, 1688, IACOBVS · II · DEI · GRATIA · laur. bust r.; below, 60; <i>rev.</i> crowned arms, etc. (B.1, <i>Fig.</i> 1054), <i>extremely fine</i>	
6	0	0	*1815	Forty Shillings, 1687, edge TERTIO, <i>extremely fine</i>	
1	10	0	1816	Forty Shillings, 1688, similar (B.4, <i>Fig.</i> 1062), <i>fine</i>	

#### WILLIAM AND MARY, 1689-1694

1	7	6	1817	Sixty Shillings, 1692 (B.2, <i>Fig.</i> 1065), <i>rare</i>	
---	---	---	------	--	--

1818	Forty Shillings (3), 1691, 1692, <i>fine</i> , and 1693 (B.3, <i>Fig.</i> 1066)	3	1	4	0
1819	Ten Shillings, 1691 (B.2, <i>Fig.</i> 1069), <i>ext. fine</i> ; Five Shillings, 1694 (B., <i>Fig.</i> 1071), <i>fine</i> ; Æ Bawbee, 1691, and Bodles (3), 1691, 92 and 94	6	2	0	0

### WILLIAM III, 1694-1702

1820	Forty Shillings, 1695, 1696 and 1697, <i>the second fine, and the third very fine</i>	3	2	2	0
1821	Twenty Shillings, 1695, <i>very fine</i> ; Ten Shillings, 1687, 1695, <i>very fine</i> ; 1696, <i>very fine</i> , and 1697, <i>all scarce</i>	5	3	0	0
1822	Five Shillings, 1695, 96, 97 and 1700; Æ Bodles, 1695, 96 and 97, <i>all fine</i>	7	1	6	0

### ANNE, 1702-1714

1823	Half Crowns, 1707 E and 1708 E, <i>both very fine</i> ; 10 Shillings Scots 1705; Shillings 1707 E, first head (two), and 1708 E*, <i>fine</i>	6	2	0	0
1824	Five Shillings Scots 1705 ( <i>three var.</i> , one with D.G.) and 1706 B.4, <i>Fig.</i> 1084); Sixpences, 1707 E, 1708 E (two var., one with E*), <i>all fine</i>	7	1	18	0
1825	Mahogany Cabinet, containing 27 trays, pierced with one inch holes, 14in. high, 9in. wide, and 10in. long, <i>lock and key missing</i>		—	—	—

### IRISH SERIES.

1826	Hiberno-Danish Pennies, in imitation of the Anglo-Saxon coins of Aethelred II, Irish type ( <i>Hild.</i> D= <i>cf.</i> <i>Roth</i> I, 19-24), <i>varied</i>	6	12	0	
1827	Hiberno-Danish Pennies ( <i>cf.</i> <i>Roth</i> II, 40, 44; IV, 90, 93; VII, 152 and others), <i>varied</i>	15	1	12	0
1828	Hiberno-Danish Pennies ( <i>cf.</i> <i>Roth</i> I, 3; V, 106; VII, 151 and 171; VIII, 174 and 177; X, 226, 233 and 234, etc.), including three fragments, <i>all varied</i>		3	5	0

### JOHN, as Lord of Ireland, 1177-1199

2	2	0	1829	Halfpennies of Dublin (7), moon-faced, with moneyers, Adam, Nicolas (2), Norman, Rodger (2) and Thomas; others of Waterford, moneyers Gefrei and Mare, <i>fine</i>	9
7	10	0	1830	Masle Farthings (4), <i>rev.</i> cross pattée, in the angles, Adam, Domo, Nico, and Oban; Downpatrick Farthings, struck by John de Cury, Earl of Ulster (sole governor of Ireland in 1185), three varieties, <i>all scarce</i>	7
13	10	0	*1831	Halfpenny, of John de Cury, <i>obv.</i> + IOHANNES: diad. head in profile to r.; <i>rev.</i> RAVL BLVHC, cross pattée within dotted circle, a lis and pellet in each angle, wt. 9½ grs., <i>fine and extremely rare, said to be the best of the six specimens discovered in Ireland about a hundred years ago (cf. Num. Chron., N.S., p. 104)</i>  <i>∴ From the Bergne (lot 340) and Murdoch (lot 271) Sales.</i>	

### JOHN, as King, 1199-1216

3	0	0	1832	Pennies of Dublin, bust in triangle (4), moneyers Robert (4) and William; others of Limerick (3), moneyers, Wace and William (2 var.); Dublin Halfpennies, of same type, Robert (3), and others of Limerick (2), Wace and William; Farthings (2) of John (?), <i>chiefly fine</i>	15
---	---	---	------	---	----

### HENRY III, 1216-1272

11	0	0	1833	"Triangle" Pennies (5) of Dublin, <i>rev.</i> long cross pommée, voided, with three pellets in each angle, moneyers, Davi (3) and Ricard (2), <i>fair</i>	5
----	---	---	------	---	---

### EDWARD I, II or III, 1272-1377

2	4	0	1834	"Triangle" Pennies of Dublin (16 varieties), and one with bust of King in circle (from Sotheby Sale, 22 April, 1920, lot 397), <i>doubtful</i> ; Triangle Halfpenny and Farthing of Dublin, <i>fine, the last two scarce</i>	19
4	0	0	1835	"Triangle" Pennies of Cork (3), and others of Waterford (7), and Halfpennies (2) and Farthing, of same mint, <i>fine</i>	13

### HENRY VI, 1422-1461 and 1470-1471

2	2	0	1836	Dublin Groats of second issue, 1460 (four varieties), and third issue (2) with B's for R's; another, of Cork (?), <i>in fair state</i>	7
---	---	---	------	--	---

## EDWARD IV, 1461-1483

*1837	Dublin Groat, first issue (1461-63), large crown within double tressure of nine arches, fleured; <i>rev.</i> CIVITAS; DVBLINIE*, long cross pattée with three pellets in each angle, <i>fine and scarce</i>	2	15	0
*1838	Dublin Groat, second issue (1463-64), annulet in first quarter; Dublin Penny, third issue (1465-66), cross fourchée on rose, <i>rev.</i> sun of sixteen rays with annulet in centre, <i>fine, but slightly clipped, very rare, illustrated</i>	6	10	0
1839	Dublin Groats (2), fifth issue (1470), bust of King facing, crowned, <i>rev.</i> cross pattée with rose in centre; another of Drogheda; Dublin Pennies (3), <i>all clipped, fair</i>	2	10	0
		6		
1840	Dublin Groats (11), sixth issue (1470-78), English type, bust of King facing, some with G on breast, <i>all varied, several clipped, from good to fine</i>	2	5	0
		11		
1841	Drogheda Groats (8), of same issue, <i>all varied, fair</i>	8	1	12
			0	
1842	Limerick Groats (3), of same issue; others of Trim (3), and Waterford (4), <i>all varied, some clipped, several fine</i>	3	15	0
		10		
1843	Pennies, possibly of the sixth issue (5 varieties), <i>clipped</i>	5	15	0
1844	Groats, seventh issue (1478), three crowns type (14) varied, <i>clipped</i> ; Kildare Groats (3) without King's name, <i>clipped</i>	1	2	0
		17		
1845	Kildare Groats, seventh issue (14), and Half Groats (5), varied, <i>mostly clipped and not fine</i>	1	16	0
		19		

## RICHARD III, 1483-1485

*1846	Groat, third issue, RICAR DREX ANGL.—HIBE. shield of arms on a long cross botonnée; <i>rev.</i> DOMI—NVS [HYBER]NIE, three crowns in pale on a cross botonnée, <i>fair and very rare (only three specimens supposed to be known)</i>	4	10	0
-------	--	---	----	---

## HENRY VII, 1485-1509

1847	Groats of Waterford, first issue (2); Dublin Groats, third issue (2), and others (3) of fourth issue, <i>several clipped</i>	1	8	0
		7		

## HENRY VIII, 1509-1547

2	12	6	1848	Groats, of first issue (1526-41) HK (Henry and Katherine of Aragon, HA (Henry and Anne Boleyn), also Half Groat, similar; HI (Henry and Jane Seymour), and HR (Henricus Rex), seven varieties, <i>some fine</i>	12
1	12	0	1849	Groats, of second issue (8), HR crowned; Dublin Sixpences, of third issue, bust of King three quarters r. (3) and Threepences (4)	15

## PHILIP AND MARY, 1554-1558

1	2	0	1850	Irish Groats, 1553, 1555, 1556, 1557 (2 var., <i>one very fine</i> ), 1558 (2 var.)	8
4	0	0	*1851	Shillings, 1555 (2) and others (3), dates illegible; and Shilling of Mary, alone, 1553, bust of Queen to left, crowned and draped, <i>rev.</i> crowned harp between M—R, both crowned, <i>fine and very rare in this unusual state of preservation, illustrated</i>	6

## ELIZABETH, 1558-1603

2	8	0	1852	Shillings (2), first issue, m.m. rose, bust of Queen l., <i>rev.</i> crowned harp between ER crowned; also, Groat, <i>fair</i> ; Shillings (3) of second issue, 1561 (3), <i>fine</i> ; and third issue (2), shield and harp type, <i>one very fine</i>	8
1	6	0	1853	Sixpences and Threepence, third issue (shield and harp type), <i>scarce</i> ; also Threepence, second issue, 1561; Æ Pennies (5), 1601 and 1602, and Halfpence (2), 1601 and 1602, <i>some fine</i>	10

## JAMES I, 1603-1625

1	0	0	1854	Shillings (2) and Sixpences (6) of the First issue, <i>varied, one of each denominations, fine</i> ; Shillings (4) of the Second issue, <i>varied</i>	12
---	---	---	------	---	----

## CHARLES II, 1649-1685

2	0	0	1855	Æ Halfpennies 1680, 81, 82, 83, 85; St. Patrick Halfpennies (2) and Farthing, <i>chiefly fine</i>	8
---	---	---	------	---	---

## JAMES II, 1685-1688

1	14	0	1856	Æ Halfpennies, 1685, 86, 88; Money of Necessity, 1691 (2), Gun Money Crowns, 1690 (2), Half Crowns (12), three of small size, all varied, <i>some very fine</i>	19
---	----	---	------	---	----

1857	Æ	Gun Money, Shillings (19), three of small size, and Sixpences (5), all varied, <i>some very fine</i>	24	2	0	0
------	---	--	----	---	---	---

### WILLIAM AND MARY, 1689-1694

1858	Æ	Halfpennies (3), 1692-4, <i>one fine</i>		15	0	
------	---	--	--	----	---	--

### GEORGE I, 1714-1727

1858a	Æ	Halfpennies, 1722 (4), 1723 and 1724, and Farthings (3), 1723 (2) and 1724, <i>chiefly very fine</i>	9	3	0	0
-------	---	--	---	---	---	---

### GEORGE II, 1727-1760

1859	Æ	Halfpennies, 1737, 41, 42, 43, 44, 46-48, 1750, 52, 53 and 1760; Farthings, 1737 and 1760; Voce Populi Halfpennies, 1760 (6 var.), <i>many very fine</i>	20	16	0	
------	---	--	----	----	---	--

### GEORGE III, 1760-1820

1860	Æ	Proof Bank of Ireland Six Shilling Piece, 1804, <i>brilliant</i>		3	0	0
1861	Æ	Halfpennies, 1766, 1769 (2), 1770, 75, 81 and 82, Proof Penny, 1805, the ordinary Penny of same date; Halfpenny, 1805, and Farthing, 1806; George IV, Pennies, 1822 and 1823, and Halfpennies, 1822 and 1825; Eire Penny, 1928, <i>all fine</i>	16	16	0	

## ANGLO-GALLIC SERIES.

### HENRY II, 1154-1168

1862		Deniers of Aquitaine (2; <i>Poey d'Arant</i> 2756 and 2758), and Obole (P. d'A. 2759), <i>fine, the Obole very rare</i>	3	1	16	0
------	--	---	---	---	----	---

### RICHARD, COEUR DE LION

(During the life-time of Henry II)

1863		Deniers of Aquitaine (3; P. d'A. 2767 and 2768; 3 var.), and Obole (P. d'A. 2769), <i>fine</i>	4	12	0	
------	--	--	---	----	---	--

### ELEANOR, Wife of Henry II

(Duchess of Aquitaine)

1864		Deniers of Aquitaine (3), P. d'A. 2741 and 43, <i>fine</i>	3	12	0	
------	--	--	---	----	---	--

### RICHARD I, 1189-1199

- 10 0 1865 Deniers (7) of Poitou, *P. d'A.* 2505, 13, 19, 2542, 43 and 46, and Obole, all varied, *chiefly fine* 8

### EDWARD I, 1272-1307

- 2 6 0 1866 Deniers of Bordeaux mint (4), *P. d'A.* 2774, 5, 77; Guessin mint, *P. d'A.* 2730; Uncertain mints (4) (*P. d'A.* 2786 and 87, and Oboles (2, *P. d'A.* 2788), all varied, *fine* 11

### EDWARD III, 1327-1372

- 11 0 1867 Lion Gros of Bordeaux, *rev.* leopard rampant (*P. d'A.* 2815), *very fine*; Gros tournois (*P. d'A.* 2857); Sterling, crowned bust, *rev.* long cross, open crown in each angle (*P. d'A.* 2877); Demi Gros, uncertain mint (*P. d'A.* 2864), *all fine* 4
- 2 18 0 1868 Billon Deniers (4) of Bordeaux and uncertain mint (*P. d'A.* 2820, 23, 2895);  $\mathcal{R}$  Sterlings (2, *P. d'A.* 2881); Gros of uncertain mint (*P. d'A.* 2862, without annulet) and  $\mathcal{R}$  Obole, *chiefly fine* 9

### HENRY, Duke of Lancaster, 1349-1351

- 3 10 0 1869 Billon Gros (2), Demi-Gros, and Sterling, struck at Bergerac (*P. d'A.* 1689, 91, 97 var., and 2701), *good, very rare* 4  
 ∴ *From the Caron Sale, Paris (lots 615-618).*

### EDWARD, The Black Prince

- 3 5 0 1870 Gros of Bordeaux, Limoges (2) and La Rochelle (*P. d'A.* 2950, 69, 70 and 3043); Hardis (6) of Agen, Bordeaux, Fontenay or Figeac, Poitiers, and La Rochelle (*P. d'A.* 2922, 63, 3051, etc.), *fine* 9
- 2 0 0 1871 Hardis (6) of Bordeaux, Limoges, La Rochelle (2 var.), and uncertain mints (2), *all varied*, and Sterling of Bordeaux, *fine* 7

### RICHARD II, 1377-1399

- 15 0 1872 Hardis (2), half-length figure of King, facing, RICARD RX AGLIE, *rev.* cross pattée, with leopard in two angles, and lis in the other two, *fine and scarce* 2

### HENRY IV, 1399-1413

- 1 17 6 1873 Hardis (3 var.) and Billon Denier (*P. d'A.* 3128), *fine and scarce* 4



**HENRY V, 1413-1422**

- |      |   |            |
|------|---|------------|
| 1874 | Gros or Florette (Ciana 1284); billon Leopards of Rouen (2 var.) and St. Lô (Ciani 1288 and 1289), <i>fine and scarce</i> | 2 0 0<br>4 |
|------|---|------------|

**HENRY VI, 1509-1547**

- |      |   |             |
|------|---|-------------|
| 1875 | Grand Blancs (11) of Chalons, Paris (4 var.), Rouen (4 var.), St. Lô, Troyes (Ciani 1306, 12, 13, 15, 17, 18 and 20); Petit Blanc of Rouen (C. 1326); Petit Parisis noir of Paris (C. 1329) and Denier tournois of Rouen (C. 1336), <i>chiefly fine</i> | 2 5 0<br>14 |
|------|---|-------------|

END OF FIRST DAY'S SALE.

*Second Day's Sale :*

---

**Friday, May 19th, 1944,**

**Commeching at 1 p.m.**

---

**ENGLISH PATTERNS AND PROOFS.**

**EDWARD III, 1327**

- 20 0 0      Lot \*1876      Pattern Penny, of London, +ED REX:ANGLIE DNS HIBN, large head of King facing, crowned, neither shoulders nor mantle; *rev.* CIVITAS LOMDOM, cross pattée and pellets, wt. 21 grs., *extremely fine and of great rarity, believed to be unpublished*
- ∴ From the Tutet, Tyssen (lot 1244), Durrant (lot 224), Bergne (lot 363), Brice, Montagu (452), and Murdoch (lot 298) Sales.*

**HENRY VII, 1485-1509**

- 28 0 0      \*1877      Pattern Groat of *Perkin Warbeck*, 1494, m.m. lion passant on both sides, DOMINE ꝑ SALVVM ꝑ FAC ꝑ REGEM;<sup>x</sup> within double tressure of five curves, a shield surmounted by a double-arched crown, the shield dividing lis and rose, crowned; *rev.* MANIꝑ TECKEL;<sup>x</sup> PHARESIX9X (*sic*), within double quatrefoil, lis and lion, crown above, rose beneath, wt. 58 grs. (*Rud. Suppl., Pl. III, 33*), *well preserved and extremely rare*
- ∴ From the Dimsdale (lot 490, £19 10s.), Sir H. Russell and Gibbs, and Murdoch (lot 402) Collections.*

**ELIZABETH, 1558-1603**

- 10 0 0      \*1878      Pattern Groat, 1601, VNVM ꝑ A ꝑ DEO ꝑ DVOBVS ꝑ SVSTINEO, three-quarter face bust of the Queen I.; *rev.* + AFFLICTORVM ꝑ CONSERVATRIX, crowned Royal monogram, and date 1601 (Montagu I), *two specimens, one ext. fine*; and Penny, + THE PLEDGE OF, Queen's bust as above; *rev.* A ꝑ PENNY: type as last (Mont. 2), *very good, rare*

## CHARLES I, 1625-1649

1879	Pattern Shilling, m.m. plume, crowned bust l.; <i>rev.</i> shield plumed, the plume dividing C—R, <i>fine and rare</i> ; Pattern Half Groat; and Æ Pattern Farthing, crowned rose between C—R, <i>rev.</i> A:FARTHING:PI.EDGE, type of the obv. (Mont. 4), <i>fine</i>	4	0	0
------	--	---	---	---

3

## COMMONWEALTH, 1649-1660

*1880	Pattern Half Crown, by <i>Ramage</i> , 1651, m.m. mullet, shield of St. George; <i>rev.</i> GAVRDED·WITH·ANGELES· shields of St. George and Ireland, supported by angel; edge plain, <i>well preserved and very rare</i> ∴ <i>From the Addington, Montagu (lot 709), Murdcch (lot 423) and Bliss, 1916 (lot 480) Sales.</i>	42	0	0
*1881	Pattern Half Crown, by <i>Blondeau</i> , 1651, m.m. sun on obv.; <i>rev.</i> GOD:WITH:US.165I, the two shields, above which II:VI; edge inscribed, TRVTH <sup>1</sup> ANDIPEACEI1651—PETRVS I BLONDÆVS I INVENTOR I FECIT, etc., ( <i>Rud.</i> , Pl. XXXI, 3), <i>fine and very rare</i>	15	10	0
*1881a	Pattern Farthing, by <i>Ramage</i> , three pillars and ship (Mont. 5), <i>very fine and rare</i> ; <i>from the Bliss Sale</i>	4	5	0

## OLIVER CROMWELL, 1656-1658

1882	Pattern Crown, 1658, by <i>Simon</i> , usual type, <i>with the flaw, in finest state</i>	8	15	0
1883	Pattern Crown, 1658, known as the "Dutch" Crown ( <i>Henfrey</i> , Pl. IV, 5), <i>edge slightly damaged, otherwise very fine</i>	16	10	0
1884	Pattern Half Crown, by <i>Simon</i> , 1658, <i>extremely fine</i>	7	0	0
1885	Pattern Shilling, by <i>Simon</i> , 1658, <i>extremely fine</i>	5	5	0
1886	Shilling, 1658, as last, <i>fine</i>	1	12	0
*1887	Pattern Ninepence, by <i>Tanner</i> , 1658, plain edge, <i>ext. fine, very rare</i> ∴ <i>From A. Mann Sale, 1917.</i>	19	0	0

## CHARLES II, 1660-1685

- 3 15 0 1888 Pattern Broad, by *Simon*, 1660, in *silver*, laur. bust of King r., below S; *rev.* square shield, crowned (*Rud.*, *Pl.* XXXIV, 3), *very fine*
- 3 0 0 1889 Pattern Broad, by *Simon*, 1660, in *silver*, as last, *very fine*
- 1 16 0 1890 Proof Shilling, 1663, first bust var., *ext. fine and rare*
- 11 0 0 1891 Pattern Farthing, 1665, in *silver*, QVATVOR MARIA, etc., laur. and cuirassed bust, with short hair, date below; *rev.* Britannia with right leg bare, and *without* drapery streaming from under the right arm, plain edge (*Mont.* 18); others (3) of the same date and usual type, with grained edges, and another, dated 1676, laur. and cuir. bust with long hair, plain edge, the first extremely fine and rare, only one other said to be known (in the former Weightman collection)  
 ∴ *From the Bliss Sale*, 1916, lot 536.
- 4 5 0 1892 Pattern Farthing, 1671, bust l. with short hair, *fine and rare*; another of 1676, as in last lot; and two in *copper*, 1665 (*Mont.* 18), *very fine* 4
- 1 8 0 1893 Pattern Halfpenny, undated, in *copper*, CAROLVS A CAROLO, King's bust in Roman armour l.; *rev.* QVATVOR, etc., BRITANNIA, Britannia seated l. (*Mont.* 11), *very fine*

## WILLIAM AND MARY, 1688-1694

- 1 2 0 1894 Pattern Farthing, 1694, in *silver*, jugate busts r.; *rev.* Britannia (*Mont.* 4), *pierced*; Pattern Farthing in *silver*, bust of William, *rev.* bust of Mary (*Mont.* 15, two), one in *copper*, *ext. fine*; another, Æ (*Mont.* 16) 5
- 2 5 0 1895 MARY (alone). Pattern Farthings in *silver* (2) and *copper* (3), bust of Queen r., EX CANDORE DECVS (*Mont.* 18) and EX NOCTE DIEM (*Mont.* 19), *varied*, *four very fine* 5

## WILLIAM III, 1695-1702

- 2 8 0 1896 Sixpence, 1696, *ext. fine*, and another, 1697, bust with curls in front of breast, *very rare* 2
- 3 7 6 1897 Pattern Farthings, 1698, in *silver*, laur. and cuirassed bust to right, BRITANNIA 1698 Britannia seated l. (*Mont.* 2); Pattern Farthings, in *silver*, bust r., *rev.* NON DEVIO, the sun shining (*Mont.* 22, three), *very fine* 5

## ANNE, 1702-1714

- |      |   |             |
|------|---|-------------|
| 1898 | Proof Sixpence, 1703, VIGO, <i>ext. fine</i> ; Æ Pattern Halfpenny, by <i>Crocker</i> , bust of Queen l., <i>rev.</i> no legend, the Queen as Britannia seated l. under a crown, and holding a rose and thistle with leaves, plain edge ( <i>Mont.</i> 4), <i>extremely fine and rare</i> , from the <i>Bliss Sale</i> , lot 721, formerly <i>Marsham</i> , 1888, lot 774 | 6 0 0       |
| 1899 | Pattern Farthing, Æ, by <i>Crocker</i> , 1713, usual type, but without inner circle on <i>obv.</i> and <i>rev.</i> large lettering in legend within a linear circle inside a milled border, <i>very fine and rare</i> , from the <i>Montagu Sale</i> , 1897 (lot 150), and <i>Bliss</i> (726); another, dated 1714, <i>false</i>  | 4 10 0<br>2 |
| 1900 | Pattern Farthing, Æ, by <i>Crocker</i> , 1714, ANNA · DEI · GRATIA, bust l., <i>rev.</i> BRITAN—NIA 1714, Britannia seated to l., holding spear and laurel branch, edge raised ( <i>Mont.</i> 15), <i>ext. fine</i>   | 3 0 0       |

## JAMES VIII, Old Pretender, 1716

- |       |   |             |
|-------|---|-------------|
| *1901 | Pattern Shilling (or Guinea), in <i>silver</i> , 1716, IACOBVS · VIII · DEI · GRATIA · laur. bust r.; <i>rev.</i> SCO · AN · FRA ET HIB REX · crowned shields, crosswise, <i>brilliant</i>  | 9 0 0       |
| 1902  | Pattern Shilling (or Guinea), in <i>silver</i> , 1716, similar, but JACOBVS TERTIVS, <i>very fine</i> , and <i>silver Touch Pieces</i> of Charles III, Young Pretender ( <i>cf.</i> B.N.J. XV, 175) and James VIII, <i>the second very fine</i> | 18 0 0<br>3 |

## GEORGE I, 1714-1727

- |      |   |             |
|------|---|-------------|
| 1903 | Pattern Farthing, 1717, in <i>silver</i> , <i>fine</i> ; Pattern Farthing, in <i>copper</i> , 1723, by <i>Wm. Wood</i> , laur. bust r., <i>rev.</i> HIBERNIA:1723 ( <i>N.C.</i> 1903, p. 47, <i>Pl.</i> I, 8, 9), <i>extremely fine and rare</i> , from the <i>Rev. Gerard Bancks Collection</i> , 1888 | 11 0 0<br>2 |
|------|---|-------------|

## GEORGE II, 1727-1760

- |      |   |       |
|------|---|-------|
| 1904 | Proof Shilling, 1746, without LIMA, <i>rev.</i> plain, <i>ext. fine</i> | 2 0 0 |
|------|---|-------|

## GEORGE III, 1760-1820

- |      |  |            |
|------|--|------------|
| 1905 | Pattern Crown, by <i>Webb</i> and <i>Mills</i> , undated, <i>ext. fine</i>   | 5 10 0     |
| 1906 | Pattern Guinea, 1798, by <i>Küchler</i> , incuse letters on raised borders; another, in <i>copper</i> , similar, <i>both ext. fine</i> | 3 0 0<br>2 |

2 10 0	1907	Proof "Northumberland" Shilling, 1763, by <i>Tanner</i> ; Proof Shilling, 1787, by <i>Pingo</i> , plain edge; another, grained edge; Proof Shilling, 1817, plain edge, <i>in mint state</i>	4
2 15 0	1908	Proof Sixpence, 1787, by <i>Pingo</i> , plain edge; another, grained edge; Pattern Sixpence, 1790, by <i>Droz</i> , monogram crowned and Britannia; Proof Sixpences, 1817 and 1819, <i>all extremely fine</i>	5
2 10 0	1909	Proof Half Crown, 1816, plain edge, <i>in mint state</i>	
6 6 0	1910	Proof Farthings (2), by <i>Küchler</i> , 1797, in <i>silver</i> , mantled bust, with incuse legends on a broad band, struck on a thick flan, and 1799, milled border, date below, 1 FARTHING below Britannia; Pattern Farthing, by <i>Küchler</i> , 1798, with incuse legends, <i>brilliant and rare</i>  ∴ <i>From the Allen, 1898, and Bliss, 1916 (lot 622) Sales.</i>	3
7 10 0	1911	Proof "Cartwheel" Two Pence, Penny and Halfpenny, 1797, by <i>Küchler</i> ; Proof Halfpennies (2), by the same artist and date, SOHO; Proof Halfpenny and Farthing, 1799, <i>all in mint state</i>	8
1 12 0	1912	Pattern Halfpenny, 1799, <i>rev.</i> VIGEBIT IN OMNE AEVUM; another, with crowned bust of King; Proof Penny and Farthing, 1806; Halfpenny, 1805, BRITANNIARUM; Proof Penny, Halfpennies (2), 1805 and Farthing, 1806, HIBERNIA; and Kettle's AR model for third guinea, <i>all very fine</i>	10
1 1 0	1913	<i>Droz's</i> Pattern Halfpennies (6), 1788 and 1790, varied, and Farthing, 1790, <i>restrikes, very fine</i>	7
7 5 0	1914	Pattern broad-rim Penny, 1797; Pattern Halfpenny, 1799, crowned bust; Proofs of the broad rim Farthing, 1798, Halfpenny and Farthing, 1799; Penny, Halfpenny and Farthing, 1806, etc., <i>all very fine gilt proofs</i>  ∴ <i>From the Bliss Sale, lot 735.</i>	9
5 15 0	1915	Proofs of Bank of England Dollar (1804, in <i>copper</i> , 4, three on thick flans) and Proof Bank Token for 5s. 6d., 1811, <i>all very fine</i>	5

#### GEORGE IV, 1820-1830

18 0	1916	Half Crowns of 1821 and 1823, Maundy 4d., 1827, and Threepences (2), 1826 and 1829, <i>very fine</i>	5
------	------	--	---

## WILLIAM IV, 1830-37

1917	Proof Half Crown, 1831, by W. Wyon, W.W. on truncation, in script letters, plain edge; another, similar, but W.M. in Roman capitals; the ordinary Half Crown, 1834, milled edge, in proof condition, <i>two from the Bliss Sale, lot 632</i>	2	12	6
				3
1918	Proof Shilling, 1831, plain edge, and another, 1834, milled edge; Sixpence, 1834; Proof Groat, 1836, edge plain, and the ordinary specimen; Maundy 4d., 1831, <i>all ext. fine</i>	1	14	0
				6

## VICTORIA, 1837-1901

1919	Pattern Crown, 1837, after Bonomi (non-official), incuse type, with Minerva on <i>rev.</i> , plain edge, <i>in ext. fine state</i>	5	5	0
1920	Pattern Crown, 1839, by W. Wyon, <i>rev.</i> Una and the lion, plain edge, <i>fine, edge slightly damaged and a scratch on obv., very rare; from the Maish Sale, 1918, lot 483</i>	16	10	0
1921	Crown, 1844, ANNO REGNI VIII, <i>very fine</i> ; Jubilee, 1887, Crown, Double Florin, Florin and Shilling, <i>in mint state</i>	3	16	0
				5
1922	Proof "Gothic" Crown, 1847, by W. Wyon, plain edge, <i>ext. fine, from the Bliss Sale, lot 643</i>	3	10	0
1923	Proof "Gothic" Crown, 1847, with lettered edge, <i>Anno Regni Undecimo, in mint state</i>	2	15	0
1924	"Gothic" Crown, 1853, edge inscribed <i>Decimo Septimo, very fine and rare</i>	6	10	0
1925	Proof Crown, 1893, by T. Brock; Proof Half Crown, Florins, 1893 (2) and Shilling, <i>brilliant</i>	2	10	0
				5
1926	Pattern Half Crown, 1839, by W. Wyon; W.W. on truncation, ornamented diadem, plain fillet, edge plain, <i>brilliant, rare, from the Bliss Sale, 1916, lot 645.</i>	2	0	0
1927	Proof Half Crown, 1853, edge grained; Proof Half Crowns, 1837 and 1893; Proof Florin and Shilling, 1887; and an ordinary Half Crown, <i>a brockage</i>	2	10	0
				6
1928	Pattern Decade, 1848, by W. Wyon, plain edge; Pattern One Dime, 1848, plain edge, <i>brilliant, both from the Bliss Sale, lot 648</i>	5	5	0
				2
1929	Pattern Florins, 1848 (3), varied, plain edges, <i>in mint state, from the Bliss Sale, lot 645</i>	2	2	0
				3

3	5	0	1930	Proof Florin, 1853, edge grained, and ordinary "Gothic" Florins, 1849, 1852, and 1872; Proof Shilling, 1887; Proof Half Florin, by Wiener, 1863, plain edge, and Pattern Ninepence, by the same artist, uniface, <i>all in mint state</i>	7
---	---	---	------	---	---

### BRITISH SIEGE COINS.

2	10	0	1931	<i>Lundy Island</i> (attributed to), Sixpence, 1646, and Groat, of same date, <i>fine and rare</i>	2
4	5	0	1932	<i>Newark</i> , Shillings, 1645 (two varieties, one reading NEWARKE), <i>one very fine</i>	2
3	10	0	1933	<i>Ormonde</i> Crown, and Half Crown (1643), <i>fair</i>	2
6	5	0	1934	Half Crown, <i>fine</i> ; Shillings (2), Sixpences (3), Groat, Threepence and Twopence, <i>the last rare</i> , and Kilkenny Æ Halfpenny	10
10	0	0	1935	<i>Pontefract</i> Shilling, 1648, lozenge shape, OBS P.C. 1648, castle, rev. DVM:SPIRO:SPERO around CR crowned, <i>fine and rare</i>	
6	5	0	1936	Octagonal Shilling, 1648, struck after the King's death, wt. 72 grs., <i>very good and rare</i> ; from the <i>Maish Sale</i> , lot 361	

### NINETEENTH CENTURY

#### SILVER TOKENS.

2	0	0	1937	George III, Bank of England 5/- Token, 1804; Bank Token for 1/6, with bust, 1811 and 1812, and others with head, 1812, 1813, 1814, 1815 and 1816; Irish Bank Token for 30 Pence, 1808, Tenpence 1805, 6 and 1813 (2), and Fivepence, 1805 (3), <i>chiefly very fine</i>	17
2	0	0	1938	Shilling Tokens of Bath, 1812, Bilston (2), Bedworth, Birkinshaw, Blandford, 1811 (2), Birmingham (8), 1811, Bradford, 1812 (2), Bridlington and Bristol (7), <i>chiefly fine</i>	25
1	8	0	1939	Sixpenny Tokens of Bilston (3), Birmingham (6), and Bristol (17), etc., <i>chiefly fine</i>	26
1	10	0	1940	Shilling Tokens of Cheltenham, 1811 (2), Chichester, 1811, North Cornwall, 1811, Devon (2), Doncaster, Dorsetshire; Sixpences of Dorsetshire (3), Derby, Leicester and Rutland, <i>chiefly fine</i>	12



1941	Fazeley Shilling Tokens, 1811 (4) and Sixpences (6), Flintshire Shillings (3), and Sixpences (2), 1811, and Frome Selwood Shillings (2), <i>fine</i>	17	2	6	0
1942	Gloucester Shilling Tokens (4), Somersetshire, Wiltshire and Gloucestershire Shilling Tokens (6), and Sixpences (2); Hampshire Shillings (3) and Sixpence; Hereford Shilling, 1811, and Hull 1/6 Tokens, 1811 (2), <i>fine</i>	18	2	10	0
1943	Leeds Shilling Tokens, 1811 (5), 1812 (5), and Sixpence; Lincoln Shillings, 1812 (3), and London Shillings (8), <i>varied</i> , and Sixpences (13), <i>varied, fine</i>	35	2	12	6
1944	Marlborough Shillings (3) and Sixpences (4); Merthyr, 1811, Shilling; Nantwich Shillings (2), Neath, Newark (3), Newcastle-on-Tyne (4), and Norfolk (2); Sixpence of Neath (3) and Newport, I. of W. (5), <i>chiefly very fine</i>	28	3	0	0
1945	Hull, Shilling and Sixpence, 1811, and Sixpences (2), Peterborough Shillings, 1811 (2); Poole Shilling and Sixpence, 1811; Romsey Shilling; Scarborough Sixpence, 1812; Sheffield Shillings (6) and Sixpence, 1811; Shaftesbury Shilling and Sixpences (4); Southampton Shilling, and another of Stafford; Shilling and Sixpence of Stockport, etc., <i>several very fine</i>	26	2	17	6
1946	Teignmouth Shilling, 1811; Weybridge Shillings (2), Whitby (2), Worcester (4), Andover, and York (10), <i>fine</i>	20	3	5	0
1947	York Shilling Tokens, 1811 (5) and Sixpences (4); Yarmouth Shillings (4), <i>some very fine</i>	13	1	10	0

#### ENGLISH REGAL COPPER COINS

1948	James I, Harrington Farthings (22) and Half Farthings (2), <i>varied</i>	24	1	10	0
1949	Charles I, Richmond Farthings, etc., <i>varied, very fine</i>	30	3	3	0
1950	Others, <i>varied, many fine</i>	48	1	12	0
1951	Others, <i>varied</i>	94	1	10	0
1952	Charles II, Halfpennies (2), 1672 and 1673, CAROLVS:A: CAROLO, laur. bust l., <i>rev.</i> Britannia, <i>the first fine</i> ; Farthings, 1665, 1672-1675, <i>fine</i>	7	1	15	0

3	15	0	1953	James II, Halfpenny, struck in tin with copper plug in centre, <i>obv. fine, scarce</i> ; William and Mary, Halfpenny in tin, <i>obv. fine</i> ; Æ Halfpenny and Farthing, 1694, <i>fine</i>	4
1	16	0	1954	William III, Halfpennies (7), 1696-1701; Farthings (7), 1695-1700, <i>several fine</i>	14
2	17	6	1955	George I, Halfpennies (10) 1717, (2) 1718-23, <i>two very fine</i> ; Farthings (8), 1717-1724, <i>three very fine</i>	18
1	12	0	1956	George II, Halfpennies (25), 1729, 1730 (2), 1731-36, 1738-40, 1743-54; Farthings (15), 1730-31, 1733-34, 1736-37, 1739, 1741, 44, 46, 49-52, 1754, <i>several very fine</i>	40
2	10	0	1957	George III, Twopenny Piece, 1797; Pennies, 1797 (3), 1806 (2), 1807; Halfpennies, 1770, 72 (2), 73 (2), 1774-6, 1799, 1806 (4), and 1807; Farthings (8), 1773-5, 1799, 1806 (2), 1807, <i>chiefly very fine</i>	28
1	1	0	1958	George IV, Pennies (3), 1825-27; Halfpennies (3), 1825-27; Farthings (10), 1821-23, 1825, 26 (2), 27-30, <i>several very fine</i>	16
1	12	0	1959	William IV, Pennies (3), 1831, 34 and 37; Halfpennies (3), same dates; Farthings (5), 1831, 34-37, <i>chiefly fine</i>	11
1	0	0	1960	Victoria, Pennies (19), 1841, 43, 46-48, 1851, 53, 54 (5), 55 (3), 57, 58 (2) and 1859, <i>many very fine</i> ; Halfpennies (13), 1838, 41, 44, 47, 1851-59; Farthings (22), 1838-39, 40-59, <i>many fine</i>	54
2	15	0	1961	Bronze Pennies (47); Halfpennies (34) and Farthings (55), <i>varied dates, many very fine, some scarce</i>	135
2	0	0	1962	Edward VII, Pennies (7), Halfpennies (9), and Farthings (8); George V, Pennies (18), Halfpennies (20) and Farthings (20); George VI, Pennies (4), Halfpennies (4) and Farthing, including 4 Threepenny Pieces (4), <i>all in mint state</i>	94
<b>SEVENTEENTH CENTURY TOKENS</b>					
4	10	0	1963	<i>Bedfordshire</i> (9), Barton in the Clay, Bedford (4), Cranfield, Dunstable, Elstow, Shefford; <i>Berkshire</i> (51), Abingdon (5), Blowberry (3), Farringdon, Hagborn, Harwell, Hungerford, Ilsley, Maidenhead (2), Newbury (3), Reading (4), Wallingford (10), Wantage (4), Windsor (3), and Wokingham (4), etc., <i>all varied</i>	60

- 1964 *Buckinghamshire* (10), Aylesbury, Buckingham (2), Newport Pagnell (2), Olney (2), Thornborough, Tingewick, Wycombe; *Cambridgeshire* (80), Arrington, Cambridge (36), Chatteris, Doddington, Ely (15), Gamlingay (2), Hinxton, Isleham, Linton, Littleport, March (4), Royston, Isham (3), Whittlesey (2), Wilbraham, and Wisbech (7), etc., *all varied* 90
- 1965 *Cornwall* (8), Falmouth (3), Helston, Penryn (2), Redruth, and St. Ives; *Cumberland* (1), Cockermouth; *Derbyshire* (3), Chesterfield (2), Tideswell; *Devonshire* (5), Axminster, Bideford, Bridgetown, Tiverton; *Dorsetshire* (50), Beaminster, Blandford (3), Bridport (3), Cerne Abbas, Corfe Castle, Dorchester (9), Lyme Regis (5), Melcombe Regis, Poole (10), Shaftesbury (2), Sherborne (4), Stalbridge (2), Weymouth (5), Wimborne (3), *all varied* 67
- 1966 *Durham* (4), Barnard Castle (2), Durham (2); *Essex* (75), Bardfield, Billericay, Bocking (3), Chipping Ongar, Coggeshall (2), Colchester (44, *all varied*), Dedham, Dunmow (2), Epping (heart-shaped), Felsted, Finchingfield, Hedingham, Kelvedon, Maldon, Romford (2), Saffron Walden, Springfield, Stebbing, Thaxted (4), Waltham Abbey West Ham, and Witham (2), *all varied* 79
- 1967 *Gloucestershire* (34), Bourton-on-the-Water, Bristol (8), Cirencester (8), Dursley, Gloucester (7), Northleach, Painswick, Stroud, Tetbury, Tewkesbury (2), Thornbury, Winchcombe, and Wotton-under-edge, *some irregular shapes, scarce* 34
- 1968 *Hampshire* (91), Alresford (4), Alton (4), Andover (10), Basingstoke (9), Bishop's Waltham, Blackwater, Christchurch, Cowes, Fordingbridge, Gosport (3), Hambledon, Lymington (4), Newport (5), Odiham (4), Overton (2), Petersfield (2), Portsmouth (17), Ringwood, Romsey (6), Southampton (4), Whitechurch (2), Winchester (9), *all varied* 91
- 1969 *Herefordshire* (5), Hereford (4), Ledbury (1); *Hertfordshire* (14), Baldock, Barkway, Barnet (2), Buntingford, Furneux Pelham, Hatfield, Hitchin (2), Redbourn (heart-shaped), Rickmansworth, St. Albans (3); *Huntingdonshire* (4), Catworth, Eynesbury, St. Ives, and Sawtry, *all varied* 23

- 9 10 0 1970 *Kent* (70), Ashford (2), Aylesford, Bromley, Canterbury (18), Chatham (7), Chilham, Deal (4), Deptford (3), Dover (17), Eynesbury, Faversham (2), Folkestone, Gravesend (6), Greenwich (2), Groombridge, Honychild, Hythe, and Lenham, *all varied* 70
- 2 5 0 1971 *Kent* (37), Kingstone, Maidstone (6), Margate (3), Milton near Gravesend (3), Minster, Ramsgate (2), Riverside, Rochester (3), Sandwich (6), Sevenoaks, Sittingbourne, Smarden, Strood (2), Sturrey, Sutton Valence, Westerham, Westgate, and Wye, *all varied* 37
- 5 5 0 1972 *Lancashire* (2), Manchester and Rochdale; *Leicestershire* (38), Bolton, Billesdon, *rare*; Burrow, Burton Overy, Hinckley (2), Leicester (14), Loughborough (2), Lutterworth, Market Bosworth, Market Harborough (5), Melton Mowbray (5), Mountsorrel, Saddington, and Sheepshed, *all varied* 40
- 2 12 6 1973 *Lincolnshire* (27), Alford, Boston, Brigg, Deeping (heart-shaped), Grantham (2), Grantton, Haxey, Helpringham, Horncastle, Kirton, Lincoln (9), Long Sutton (2), Market Rason, Raston, Sleaford, Stamford and Wainfleet, *all varied* 27
- 1 10 0 1974 *London* (45), Abchurch Lane (2), Aldersgate Street (7), Aldgate Without (2), Barbican, Basinghall Street (2), Basinghall Lane, Battersea, Bedford Street (2), Bedford Bury, Bell Yard, Bethlem (2), Billingsgate, Billiter Lane, Bishopsgate Within (3), Bishopsgate Without (8), Bloomsbury, Bow Lane (5), Bow Street (3) and Bread Street (2), *all varied* 46
- 1 0 0 1975 *London* (37), Bridewell (3), Broad Street, Broken Wharf (2), Bulwark Gate (2), Butcher Row (2), Channel Row, Westminster, Cannon St. (2), Carey Lane, Carter Lane, Chancery Lane (6), Charing Cross, Charter House Lane (3), Cheapside (5), Chequer Alley, Chick Lane (3), and Chiswell Street (3), *all varied* 37
- 3 10 0 1976 *London* (41), Church Lane, Churchyard Gate, Clare Market, Cloak Lane, Cloth Fair, Coleman St. (2), Cornhill (3), Covent Garden (4), Cow Cross, Cow Lane (3), Cree Church Lane (2), Cripple Gate (3), Crutched Friars (2), Curriers Alley, Customhouse Quay, Distaff Lane (2), Dowgate, and Drury Lane (9), *all varied* 41

- 1977 *London* (49), Duck Lane, Durham Yard, East Smithfield (11), Exchange, Exchange and Change Alley (2), Fashion St., Fenchurch St. (4), Fetter Lane (6), Finch Lane, Fleet Bridge (2), Fleet Lane, Fleet Street (9), Flemish Churchyard, Fore St. (4), Foster Lane, Friday Street, Garlick Hill, *all varied* 5 0 0  
50
- 1978 *London* (51), Gilt Spur Street, Golden Lane (7), Goswell St., Gracechurch Street, Gravel Lane, Gray Friars (2), Grays Inn Lane (5), Grubb St. (2), Gutter Lane, Hartshorn Lane, Hatton Garden (3), Haymarket, The Hermitage Wapping, High Timber St., High St., Holborn (21), *all varied* 4 10 0  
51
- 1979 *London* (65), Hosier Lane, Houndsditch (15), Irongate St., Cross-in-Lewin St., Jewin St. (4), King St. Wapping (2), King St. Westminster (9), Leadenhall St. (10), Leadenhall Market, Little Britain, Little Eastcheape, Lombard St., London Wall, Longacre (6), Longditch, Long Lane (2), Lothbury (2), King's head house, and Ludgate (3), *all varied* 5 5 0  
65
- 1980 *London* (43), Mark Lane, Mercers St., Milk St., Minorities (6), Moorfields (3); Moorgate (2), New Cheapside, New Crane (2), New Exchange (2), New Fish St., Newgate Market, Noble St., Little Old Bailey, Old Bailey, Old Barge House, Old Change, Old Palace Yard, Old St. (St. Lukes) (4), Peerpoole Lane, Petticoat Lane, Petty France (2), Piccadilly, Pie Corner, Postern Gate (3), Postern St., and Puddle Dock (2), *all varied* 3 0 0  
43
- 1981 *London* (53), Queen Hythe (3), Ratcliff Cross (3), Ratcliff Highway (6), Red Cross St., Rosemary Lane, Round Court, Strand (2), Russell St. (2), St. Clements (2), St. Giles in the Field (6), St. James, Westminster (6), St. John's Lane and St. (4), St. Katherine's Tower (5), St. Mary's in the Field, St. Martin's le Grand (2), St. Martin's Lane (6), and St. Mary at Hill (2), *all varied* 4 0 0  
53
- 1982 *London* (46), St. Nicholas Shambles, St. Paul's Churchyard (3), St. Swithin's Lane, Seacale Lane, Seething Lane, Shire Lane (Temple Bar) (2), Shoreditch (2), Snow Hill, Shire Lane, Smithfield, Smithfield Bars (3), Somers Quay, Spitalfields (3), Stable Yard, Strand (8), Temple Bar (5), and Thames St. (6), *all varied* 4 15 0  
46

- 4 15 0 1983 *London and Middlesex* (53), Threadneedle St. (2), Tothill St. (4), Tower Ditch, Tower Dock, Tower St., Wapping (11), Warwick Lane, Wentworth St., Wheeler St., Whitecross St. (7), White Friars, White Hart, White Horse St., Woolchurch Market, also Acton, Brentford, Chelsea, Ealing, Chiswick, Hackney, Hammersmith, Isleworth (2), Kensington (3), Lime House, etc., *all varied* 53
- 3 0 0 1984 *Monmouthshire* (2), Abergavenny, and Monmouth; *Norfolk* (52), Aylsham, Burnham Market, Carlton, Clay next the Sea, Diss, Downham Market, Emneth, Fakenham (2), Harleston (3), Litcham, Lynn Regis (8), Mendham, Norwich (26), *all varied* 52
- 3 12 6 1985 *Norfolk* (45), Outwold, Stoke, Stowbridge (2), Stratton, Swaffham, Thetford (2), Walsham, Walsingham (2), Watton, Wilton, Yarmouth (31), *all varied* 46
- 3 0 0 1986 *Northamptonshire* (3), Northampton, Oundle and Peterborough; *Nottinghamshire* (5), Mansfield, Nottingham (2), Newark; *Oxfordshire* (35), Bampton, Banbury (3), Burford (3), Chipping Norton (4), Deddington, Dorchester (2), Ewelme, Henley on Thames (3), Hook Norton (2), Oxford (14), *all varied* 43
- 2 12 0 1987 *Oxfordshire* (52), Oxford (36), Thame, Watlington (2), Witney (11) and Woolton, *all varied* 52
- 4 0 0 1988 *Rutlandshire* (1), Oakham; *Shropshire* (7), Ludlow (2), Oswestry (2), Shrewsbury and Whitechurch; *Somersetshire* (51), Bath (7), Bridgwater (10), Bruton (2), Chard (2), Freshford (2), Frome (2), Glastonbury (3), Ilchester, Ilminster (2), Langport, Shepton Mallet (2), Taunton (10), Wells (3), and Yeovil (3), *all varied* 59
- 4 0 0 1989 *Staffordshire* (7), Abbots Bromley, Alstonefield, Bilston, Burton-on-Trent, Penkridge, Stone and Stafford; *Suffolk* (57), Beccles (4), Boxford (2), Brandon, Bungay, Bury St. Edmunds (25), Cavendish, Clare (3), Cratfield, Dennington, Dunwich, Eye (2), Framlingham, Hadleigh, Halesworth, Haverhill (3), Ipswich (6), Ixworth and Lavenham, *all varied* 64
- 2 5 0 1990 *Suffolk* (37), Lowestoft (6), Melford, Melton, Mildenhall (5), Needham Market (2), Newmarket (2), Rickingham (2), Saxmundham (5), Southwold, Stoke by Clare (2), Woodbridge (5), Orford, *all varied* 37

1991	<i>Surrey</i> (26), Barnes, Cobham (2), Cranley, Croydon, Dorking (2), Egham, Epsom, Farnham (3), Guildford (8), Kingston-on-Thames (2), Mitcham, Mortlake, Richmond, Wandsworth; <i>Southwark and its localities</i> (62), Horslydown (2), Jacob St., Kent St., Mill Lane, St. George's Church, St. Thomas, Shad Thames, St. Olave, St. Saviour's Dock, Tooley St., etc., and a number of others, unclassified, <i>all varied</i>	8	15	0	88
1992	<i>Sussex</i> (23), Arundel (2), Chichester (6), Horsham, Lewes (4), Midhurst, Petworth (3), Robertsbridge, Rye (2), Seaford, and Steyning, <i>all varied</i>	2	12	6	23
1993	<i>Wales</i> (2), Mold, and Llanwillingenis; <i>Warwickshire</i> (20), Alcester (7), Birmingham, Brailes, Coughton, Coventry (5), Kington, Southam (2), Tamworth, and Warwick; <i>Westmorland</i> (2), Kendal; <i>Wiltshire</i> (33), Amesbury (3), Devizes (4), Highworth, Kingswood, Malmesbury, Marlborough (5), Salisbury (9), Warminster, Westbury, Wilton, etc., <i>all varied</i>	6	0	0	57
1994	<i>Worcestershire</i> (73), Blygworth, Bewdley (3), Bromsgrove (3), Clifton, Droitwich (2), Dudley, Evesham (16), Kidderminster (8), Oldswinford, Pershore (3), Shipston-on-Stour (5), Stourbridge (4), Upton-on-Severn, Worcester (26), <i>all varied</i>	7	5	0	73
1995	<i>Yorkshire</i> (56), Bedale (2), Beverley, Bridlington, Doncaster (6), Eastburn, Howden, Hull (3), Leeds (3), Maltby, Malton, Pickering, Poeklington, Pontefract (9), Wakefield, West Wilton, Wetherby, Whitby, and York (20), <i>all varied</i>	63	0	0	56
1996	<i>Ireland</i> (40), Antrim, Belfast (2), Borrisoecane, Carrick Fergus, Castle Chichester, Castlefeine, Cork (4), Dromore, Dublin (5), Dundalk (2), Dungarvan, Kilfinan, Kilkenny (4), Kinsale, Lazey Hill, Limerick (5), Maryborough, and Wexford; also some uncertain (9), and a few of Southwark (10), <i>all varied</i>	4	10	0	59

### BRITISH COLONIAL COINS.

1997	<i>GUERNSEY</i> . Copper coins, William IV to Edward VII, <i>very fine</i>	5	0	0	55
1998	<i>JERSEY</i> . Victoria, copper and bronze issues, Edward VII and George V, <i>fine</i>	5	0	0	37

1	4	0	1999	GIBRALTAR. Two Quarts, One Quart and Half Quart, 1842; Tokens for 2 Quarts, 1802, 1810, 1813, 1818 (2) and 1820; 1 Quart 1802, 1810 (2) and 1820, <i>fine</i>	13
3	7	6	2000	ISLE OF MAN, James, 10th Earl of Derby, Penny and Halfpenny, 1709, Pennies (2) 1733 and Halfpennies (2); James 2nd Duke of Athol, Penny and Halfpenny, 1758; George III, Penny 1786, and Halfpennies (2), Pennies (3) 1798 and 1813, and Halfpennies, similar, Victoria, copper Penny, Halfpenny and Farthing, 1839, <i>several very fine</i>	19
1	18	0	2001	IRISH FREE STATE. Half Crowns (3), Two Shillings (3), One Shilling (3), 1928; Nickel Sixpences (3) and Threepences (3); Æ Pennies, Halfpennies and Farthings (9); also Lundy Island, Puffin and Halfpenny, <i>very fine</i>	26
15	0	0	2002	IONIAN ISLANDS. Thirty Oboli (4), Æ 10 Oboli (2), 5 Oboli (2), 2½ Oboli (2) and Oboli (9), varied dates; CYPRUS, ₪ 9 Piastres 1901, and 4½ Piastres; Æ Piastres (4), Half Piastres (7), and Quarter Piastres (6), <i>chiefly fine</i> ; Malta, Æ ½ Farthing (9)	46
1	5	0	2003	INDIA. Bombay Presidency, Surat Rupees (3) and half (2); Æ Pice (2), Half Pice (3) and Quarter Pice (3); others, also with the balance (3), and lead Double Pice (Atkins 139), <i>very fine</i>	19
1	0	0	2004	Bengal Presidency, Sicca Rupees of Moorshedabad, Furruchabad, and subdivisions (15), and Æ (7), <i>fine</i>	22
3	0	0	2005	Madras Presidency, A ½ Mohur; ₪ Arcot Rupee, Half and Quarter (2), Half Pagoda (2), Quarter (3); 5 Fanams (7), Double Fanams (10) and Fanams (10), Æ 1/48 and 1/96 Rupees, 10, 10, 5 and 1 Cash (7), and others, <i>chiefly fine</i>	50
1	17	0	2006	East India Co., Victoria Rupees (8), Half Rupees (8), Quarter Rupees (20) and Two Anna Pieces (24), varied dates, <i>fine</i>	60
1	12	0	2007	Victoria, Alwar (4) and Bikanir (4) Rupees; Edward VII, Half Rupee, Quarter (4), 2 Annas (5); George V, Rupees (2), ½, ¼ (5) and 2 Annas (4) and nickel coins (12), <i>fine, varied dates</i>	42
2	8	0	2008	Various, Indian ₪ of States and East India Co., William IV-Victoria, Æ coins of varied States, East India Co. and India, varied, <i>many very fine</i>	177



2009	Ceylon, $\mathcal{R}$ 48 Stuivers 1808 and 1809, 24 Stuivers 1803; $\mathcal{Æ}$ (2); George IV, Rix Dollar 1821, $\mathcal{Æ}$ 1/48 (2), 1/96, and 1/192 Rupees; George IV, $\mathcal{Æ}$ 2 Stuivers 1815, 1 St. and $\frac{1}{4}$ St. (2), <i>fine</i> ; Half Farthings (8), George IV-Victoria, and $\mathcal{R}$ $1\frac{1}{2}$ pieces (12), William IV-Victoria, <i>fine</i>	7	10	0	37
2010	$\mathcal{R}$ 50 Cents (7), 25 Cents (10) and 10 Cents (16), from Victoria to George V; nickel 5 Cents of the latter reign (4), and $\mathcal{Æ}$ (39) varied, Victoria to Edward VII, <i>fine</i>	2	2	0	89
2011	MAURITIUS. $\mathcal{R}$ 25 Sous, undated, 20 Cents (3), 10 Cents (3); $\mathcal{Æ}$ 5 Cents (6), 2 Cents (4) and 1 Cent (4), varied; BRUNEI, $\mathcal{Æ}$ 1 Cent 1304 (2); SUMATRA, 2 Kapangs, and 1 Kapang, 1219 and Token; PULU PENANG, $\mathcal{Æ}$ Cent 1810 (Atk. 15) and Half Cent, <i>several very fine</i>	15	0		28
2012	MALACCA, $\mathcal{Æ}$ 2 and 1 Kapangs, and others, including Indian Famine Rupee, 1874; NORTH BORNEO, nickel 5 Cents 1903, $\mathcal{Æ}$ Cents (15), and $\frac{1}{2}$ Cent; SULTANA ISLAND or LABUAN, etc.	4	10	0	56
2013	STRAITS SETTLEMENTS, $\mathcal{R}$ Dollar 1903, 50 Cents (4), 20 Cents (10), 10 Cents (23) and 5 Cents (6); $\mathcal{Æ}$ coins (56), varied, <i>fine</i>	2	2	0	100
2014	HONG KONG, $\mathcal{R}$ Dollars (5), 50 Cents (3), 20 Cents (3), 10 Cents (23), and 5 Cents (22), and $\mathcal{Æ}$ (18), varied, <i>fine</i>	3	3	0	74
2015	SARAWAK. J. Brooke, Cents (2), $\frac{1}{2}$ Cents (2), 1863; C. Brooke, 50 Cents (2), 1900 and 1906, 20 Cents (3) 1900, 1910 and 1915, 10 Cents (3) and 5 Cents (2); $\mathcal{Æ}$ Cents (15), Half Cents (3) and $\frac{1}{4}$ Cent; C. V. Brooke, $\mathcal{R}$ 50 Cents 1927, nickel 10 Cents (2), 5 Cents, and 1 Cent; $\mathcal{Æ}$ Cent and Half Cent, <i>fine</i>	4	0	0	40
2016	SIERRA LEONE, $\mathcal{A}$ 20 and 10 Cents; $\mathcal{Æ}$ Cents. ST. HELENA, $\mathcal{Æ}$ Halfpenny, 1821; BRITISH WEST AFRICA, $\mathcal{R}$ Shilling, and 6 Pence, 1904; nickel Pennies (4), Halfpennies (2) and 1/10 Penny (3); Edward VIII and George VI; East Africa, $\mathcal{R}$ (4), nickel and $\mathcal{Æ}$ (11), and Southern Rhodesia, Half Crown and Shilling, 1932, <i>fine</i>	1	8	0	35
2017	EAST AFRICA and UGANDA, $\mathcal{R}$ 50 Cents (2), nickel and $\mathcal{Æ}$ (9); NIGERIA-BRITISH WEST AFRICA, $\mathcal{R}$ 25 Cents, nickel and aluminium (10); MUSCAT and OMAN, $\mathcal{Æ}$ (14), <i>fine</i>	1	1	0	36

9	0	0	2018	TRANSVAAL, President Kruger, Ponds (3), 1892, D.S., 1893 and 1897, <i>fine</i>	3
5	15	0	2019	Half Ponds (4) 1894, 1895 (2) and 1897	4
4	10	0	2020	Proof 5/- 1892 (D.S.), 2/-, 1/-, 6d. and 3d., and Æ Penny, <i>ext. fine</i>	6
4	0	0	2021	5/- Pieces (2) 1892, 2/6 (6), varied dates, 2/6 (5), 1/- (6), 6d. (6), and 3d. (7), and Æ imitation Pond (2), and Pennies (3), <i>several fine</i>	36
1	12	0	2022	SOUTH AFRICA, 2½ Shillings (3), 2/-, 1/-, 6d. (3), 3d. (2), and Æ (5); also ZANZIBAR, Said Ibn Burghash Dollar, <i>very fine</i>	15
1	16	0	2023	SOUDAN, ₤ Mahdi Dollars (5), Half Dollars (2), Quarter Dollars, etc. (3); also base metal and Æ Dollars (4), varied dates	14
1	0	0	2024	NEWFOUNDLAND, ₤ 50 Cents (2), 20 Cents (2), 10 Cents and 5 Cents (2); Æ coins and tokens (19), <i>many fine</i>	26
13	0	0	2025	NOVA SCOTIA, Æ Penny Tokens (8), Halfpennies, etc., varied; NEW BRUNSWICK, ₤ 20 Cents (3), 10 and 5 Cents, and Æ (8)	36
1	8	0	2026	PRINCE EDWARD'S ISLAND, Æ (8); MAGDALEN ISLAND, Æ (2); ANTIGUA (1); BAHAMAS (2); BARBADOES (5), <i>several very fine</i>	17
3	7	6	2027	CANADA.—₤ Dollars, 1935 and 1937; 50 Cents (6); Victoria-George VI, 25 Cents (14), 10 Cents (20) and 5 Cents (29), all varied, <i>many fine</i>	71
12	0	0	2028	Æ coins, varied (56), and nickel 5 Cents (2), <i>many fine</i>	58
2	1	0	2029	Æ Tokens, varied, some scarce, <i>many fine</i>	45
32	0	0	2030	BERMUDAS or SOMERS ISLAND, Æ Sixpence, SOMMER ISLANDS, Boar l., above VI, <i>rev. ship sailing l., very rare</i>	
2	6	0	2031	BERMUDA, Æ Penny, 1793 (3), <i>very fine</i> ; JAMAICA, nickel coins, varied dates (40), Æ Halfpenny Token, and brass ticket, <i>some fine</i>	43

2032	ST. LUCIA. Oblong middle segment of Spanish Dollar, 1781, countermarked <i>S. Lucia</i> , <i>rare</i>	3	15	0
2033	TORTOLA, half segments of Spanish Dollars countermarked TORTOLA (6) and quarter segments (5)	11	4	0 0
2034	WEST INDIES, George IV, Quarter Dollars (2), Eighths (3), and Sixteenths (2); $\mathcal{R}$ 1½d.; GUADALOUPE, $\mathcal{R}$ circular segment of Spanish Dollar, countermarked with crowned G (Atkins 87); $\mathcal{R}$ 2 Reales with heart-shaped indent; NEVIS, Cayenne Sou of Louis XV, countermarked NEVIS	11	4	0 0
2035	BRITISH HONDURAS, $\mathcal{A}$ Cent 1885 (3); BRITISH GUIANA, $\mathcal{R}$ 3 bits, segment of Spanish Dollar, with 3 as countermark; United Colony of Demerary and Essequibo, George III, 2 Guilders, 1 Guilder (2), ½ Guilder (2) and ¼ Guilder (2); $\mathcal{A}$ 1 Stuiver, and Half Stuiver (2)	14	15	0
2036	BRITISH GUIANA, William IV, $\mathcal{R}$ Guilder, ½ (3), ¼ (4) and ⅓ (3); AFRICAN COMPANY ON THE GOLD COAST, George III, $\mathcal{R}$ Ackey, 1796, <i>very fine</i> ; BAHAMA $\mathcal{A}$ ; GIBRALTAR, $\mathcal{R}$ Spanish Real, with GR countermark in circular indent; GOA lead 1801	15	3	0 0
2037	AUSTRALIA. George VI, Crown, 1937; George V, Florins (11), Shillings (2), Sixpences (5) and Threepences (10), varied dates, <i>very fine</i>	34	2	16 0
2038	$\mathcal{A}$ coins (21) and Tokens (15), varied	36	17	0
2039	NEW ZEALAND, George V; Proof Crown, Half Crown, Florin, Shilling, Sixpence and Threepence, 1935, <i>brilliant</i>	6	2	7 6
2040	George VI, Proof Half Crown, Florin, Shilling, Sixpence and Threepence, 1937, <i>brilliant</i> ; George V, Half Crown, 1933, and Shilling, 1913; $\mathcal{A}$ Tokens (7), and one of Tasmania	15	1	0 0
2041	FIJI, George V and VI, Florins (3), Shillings (3) and Sixpences (2); nickel Pennies (2); NEW GUINEA, Shilling, Sixpence and Threepence, 1935, and $\mathcal{A}$ Penny, <i>all very fine</i>	14	1	1 0
2042	Miscellaneous Colonial $\mathcal{R}$ (11) and $\mathcal{A}$ (11); countermarked 2 Reals with head of Isabella II and COSTA RICA, and another ¼ Dollar 1801, countermarked	25	15	0

1	10	0	2043	Australian Trade Tokens, varied	50
2	0	0	2044	Others, including a number of New Zealand and Tasmania, varied	46

**UNITED STATES OF AMERICA**  
**COINS, TOKENS, TICKETS, Etc.**

7	5	0	2045	MASSACHUSETTS. Pine Tree Shilling, 1652, large size, and Oak Tree Threepence, of same date, <i>rare</i>	2
4	10	0	2046	Pine Tree Shilling, 1652, small size, <i>very good</i>	
4	0	0	2047	Pine Tree Shilling, 1652, small size, the 5 of date upright, <i>fine</i>	
1	14	0	2048	FLORIDA. James II (1685-88), 1/24 Part Real, in pewter, Plantation Token, <i>fine and rare</i>	
4	10	0	2049	ROSA AMERICANA COINAGE. George I Æ Twopence (2), 1722; others, 1723 (3); Halfpennies, 1722 (2); Pennies, 1722 (2) and 1723 (4)	13
1	14	0	2050	NEW JERSEY, Æ Cents (8), <i>some good</i>	8
1	16	0	2051	MASSACHUSETTS, Æ Cents, 1787 (2) and 1788 (5), <i>some fine</i>	7
	16	0	2052	KENTUCKY, Æ Cent (1790), plain edge (5), <i>fine</i>	5
2	15	0	2053	VIRGINIA, Æ Halfpennies, 1773 (5), <i>two fine</i> ; CONNECTICUT, Æ Cents, 1787 (9), <i>some fine</i>	14
2	8	0	2054	VERMONT, Æ Cent, 1789; WASHINGTON PIECES, Æ Cents, 1783, military bust (15), Ship Halfpenny, 1793 (2), <i>one fine</i>	18
2	1	0	2055	WASHINGTON PIECES. Æ Pennies, 1795, date on rev. (2); Cents 1791, small eagle (2), <i>one very fine, rare</i> ; double head Cents 1783 (7)	11
1	12	0	2056	THE FUGIOS, Æ Cents 1787 (2); NOVA CONSTELLATIO, Æ Cents 1783 (3), Cents 1785; NEW YORK, Æ Token 1795, Talbot, Allum and Lea Cent, <i>very fine</i>	7
1	0	0	2057	U.S.A. Merchants Tokens, varied	50

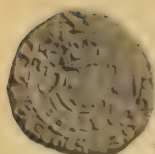
2058	Another lot, varied, some in brass, white metal, etc.	58	18	0
2059	A similar lot, of similar description	53	1	0 0
2060	The series of Private Tokens, issued by Samuel Henry Hamer, Halifax, Yorkshire, in various metals, <i>all very fine</i>	34	10	0 0
2061	Mahogany Cabinet, with double doors, brass handles, lock and key, 15in. high, 15 wide, and 13 deep, containing tray with brass knobs, fitted with inch holes to hold 72 coins each, some trays broken and damaged by enemy action		15	0 0
2062	Oak Cabinet, with double door, lock and key, 14in. high, 12 wide and 12 deep, with 25 trays, pierced with holes, 1½in. diam.		5	10 0
2063	Mahogany Cabinet, with single door, brass handles, lock and key, 15½in. high, 12in. wide, and 11in. deep, with 35 trays, one missing and another broken, pierced with varied size holes		7	0 0
2064	Oak Cabinet, 15in. high, 12 wide x 8½ deep, with seven drawers		1	5 0

END OF SALE.

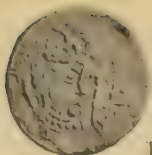


THE ARGYLL GALLERY.

7, ARGYLL STREET,  
OXFORD CIRCUS, W.1.



1671



1673



1675



1678



1683



1684



1689



1694



1696



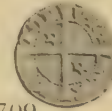
1703



1705



1709



1713



1719



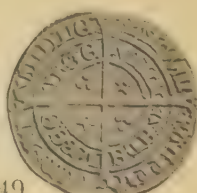
1722



1748



1759



1749



1761



1764



1771



1765



1772





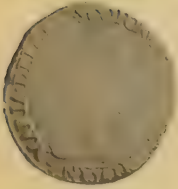




1777



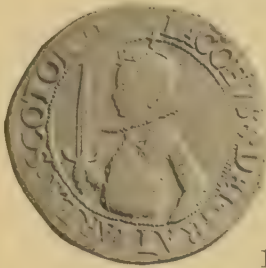
1778



1782



1779



1787



1781



1791



1803



1793



1814



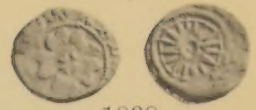




1831



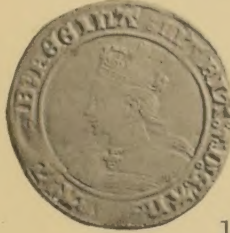
1837



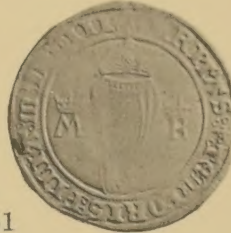
1838



1846



1851



1876



1877



1878



1879



1880



1881



1887



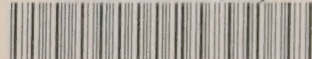
1881A



1901







## PRICED CATALOGUES

of Coins and Medals.

---

*A*FTER each sale these catalogues are issued with the prices realised printed in the margin opposite each lot, thus giving at a glance a reliable guide to values.

The final test of value must always be auction prices rather than the figures given in books of reference, for changing times and fashions soon render the latter obsolete and misleading.

On the average we issue twelve Coin and Medal catalogues a year, some of which are usually of sales of important collections. The **priced catalogues** are posted to subscribers as soon as ready, usually about a week after the date of sale and the subscription is . . . .

**ONE GUINEA per annum.**

# Messrs. Glendining & Co., Ltd.

CONDUCT AUCTION SALES OF  
SILVER, JEWELLERY, ANTIQUE  
FURNITURE, VIOLINS

---

War and Commemorative Medals = Coins  
Postage Stamps = Fine Art = etc.

---

WEEKLY THROUGHOUT THE SEASON.

---

*CASH ADVANCES, IF REQUIRED,  
ON LOTS SENT FOR  
ABSOLUTE SALE.*

---

**Lots to be included in these Sales  
should be sent in as soon as possible.  
Minimum Charge for Single Lots 5/-**

---

*PROMPT SETTLEMENTS*

---

**GLENDINING & CO., Ltd.**

**7, ARGYLL STREET, OXFORD CIRCUS, W.**